

Arc of Riolan Ligation



Khaled Madbouly, MD, PhD, FRCS, FACS, FASCRS, FISUCRS,
MBA

Professor of Colorectal Surgery

Department of Surgery - University of Alexandria, EGYPT

Consultant Colorectal Surgeon - Cleveland Clinic Abu Dhabi

President of ESCRS

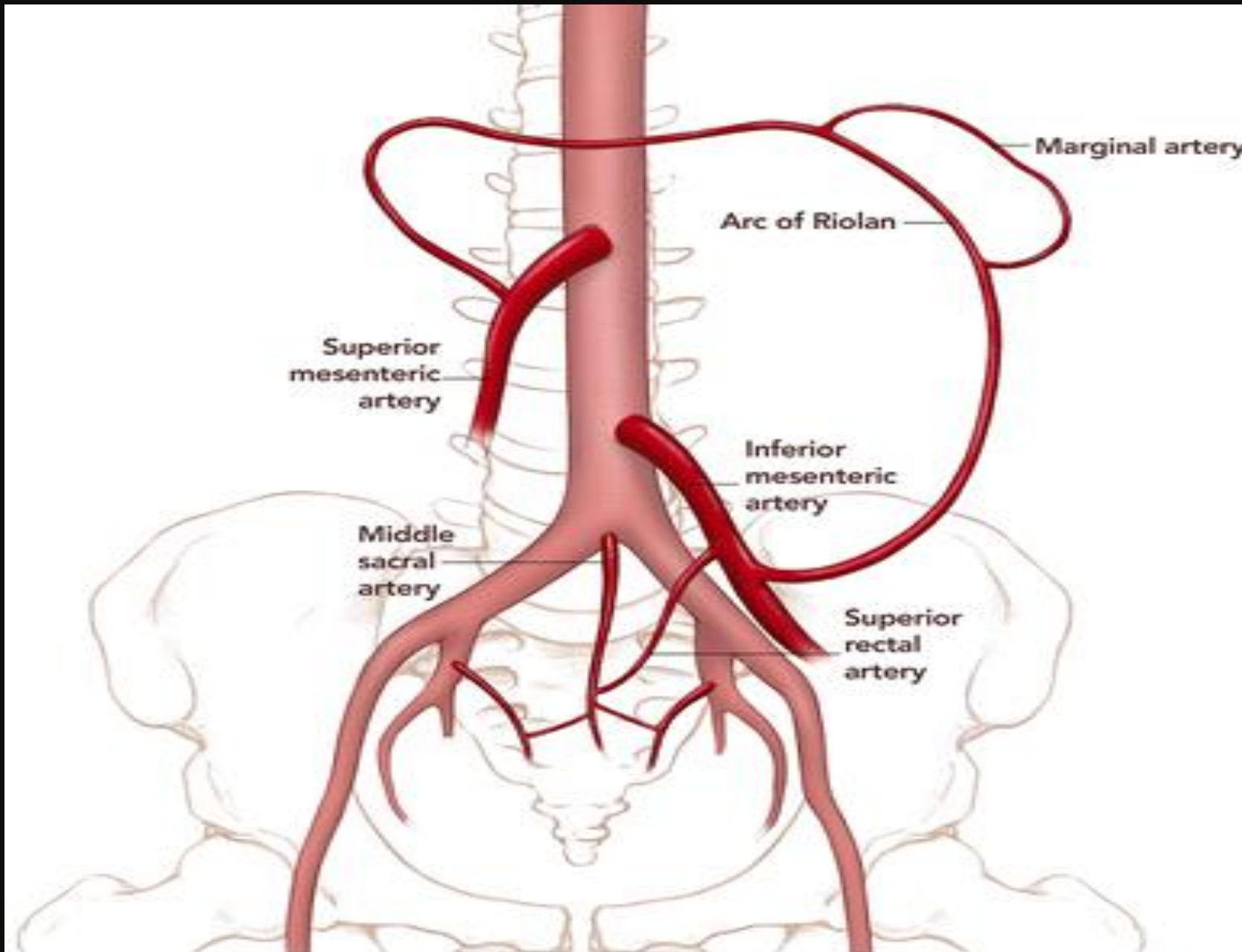
Vice President of Egyptian Board of Surgery

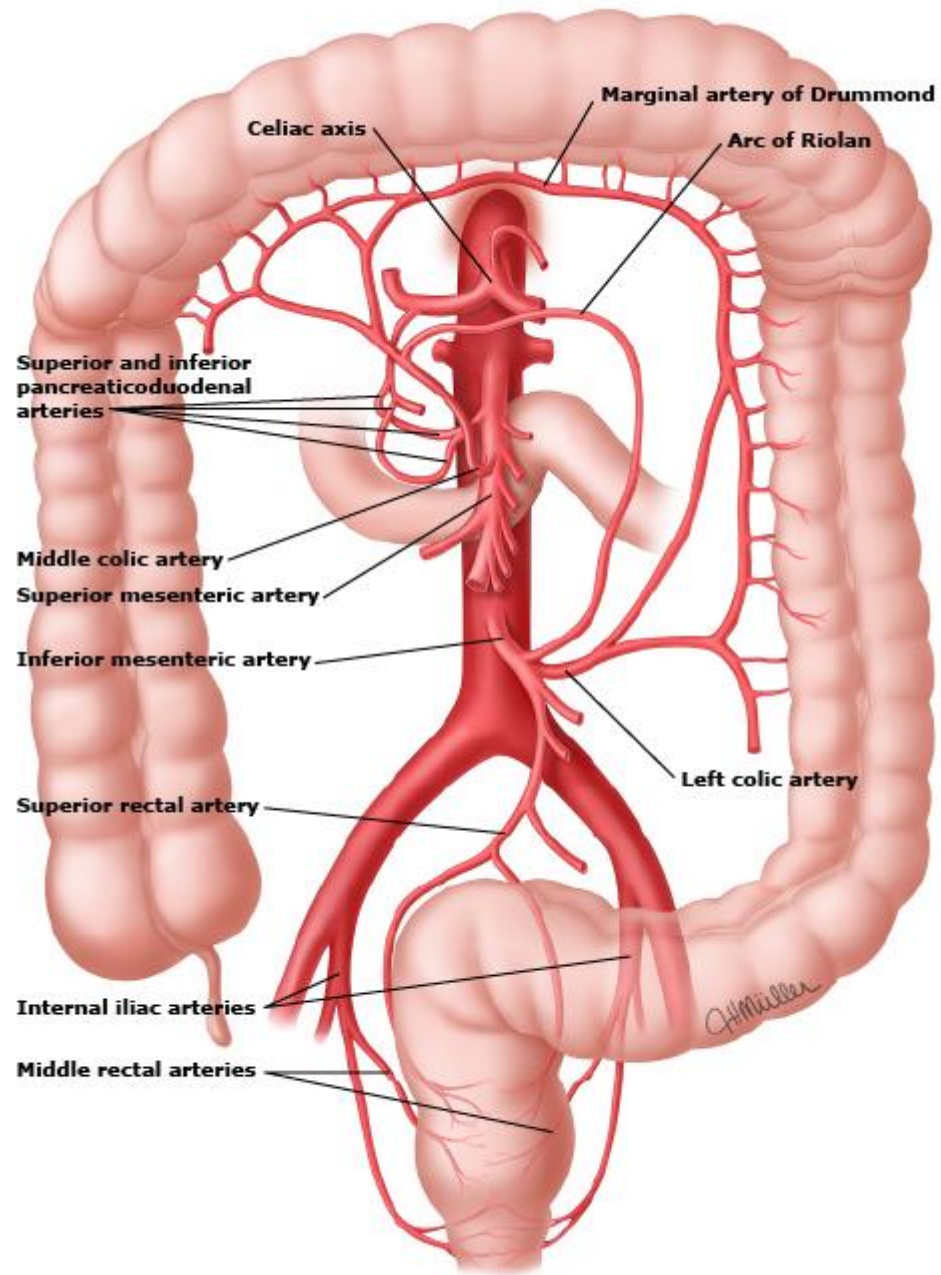
Vice President of Egyptian Board of Colorectal Surgery

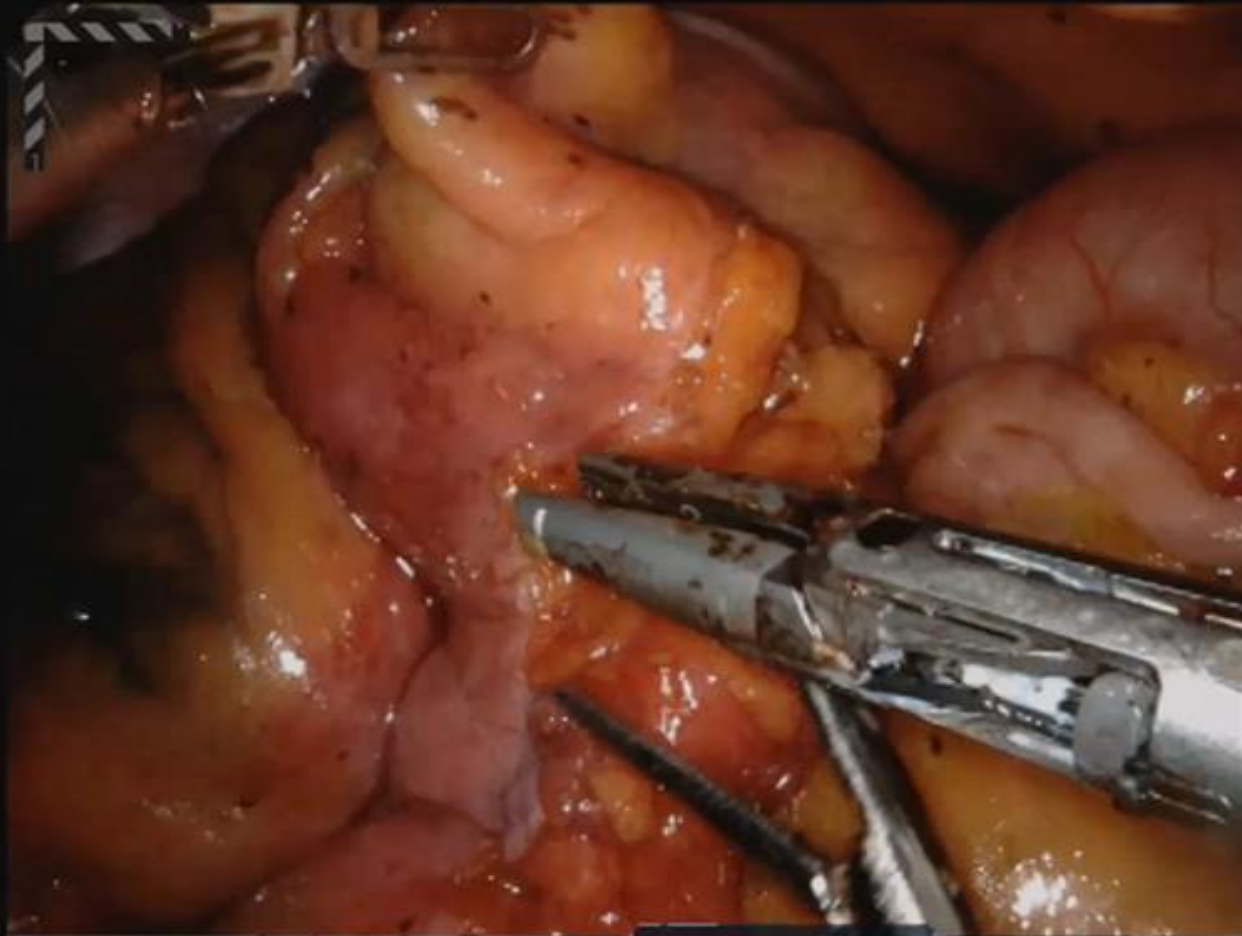


- ▶ The arc of Riolan, also known as the **mesenteric meandering artery (of Moskowitz) or central anastomotic mesenteric artery**, is an arterioarterial anastomosis between the superior and inferior mesenteric arteries









1 TUMOR PENETRATED
MUSCLE
2 PENETRATED
MUSCLE PORTAL
3
4 YELLOW LABELER
FLIP UP

