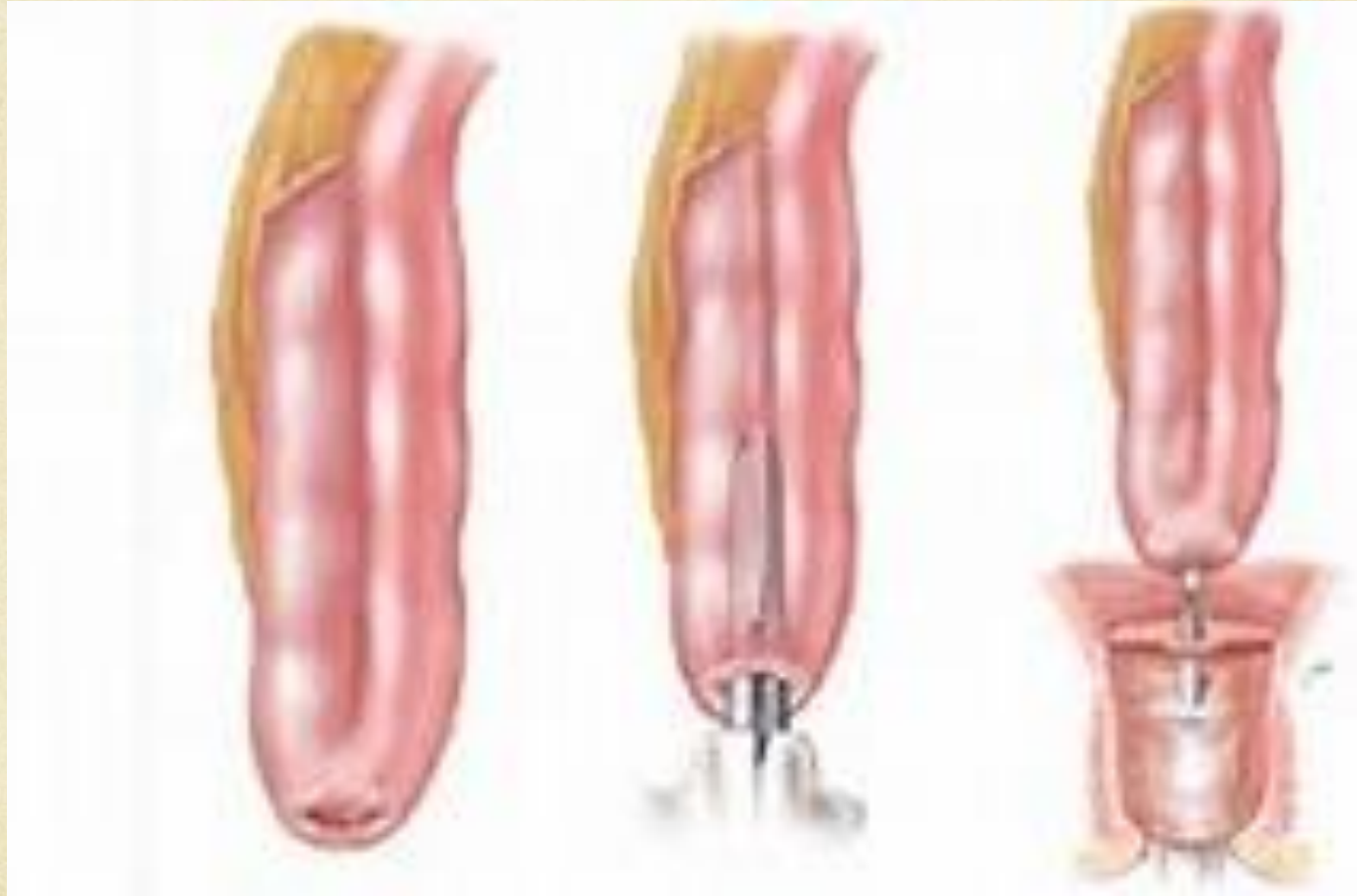


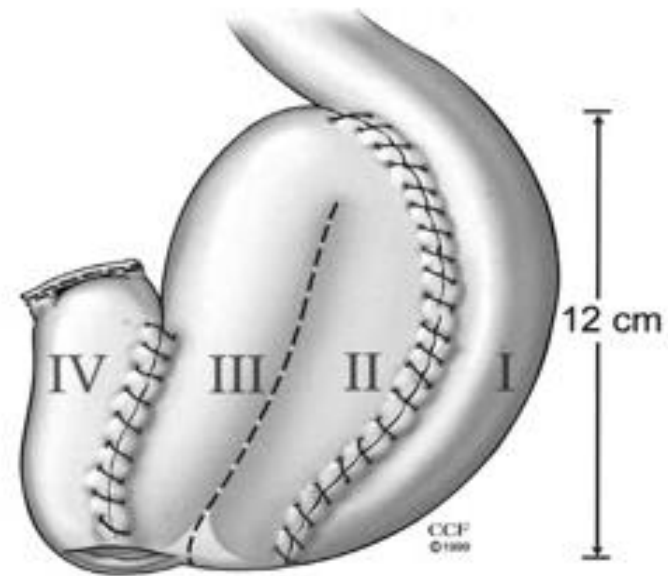
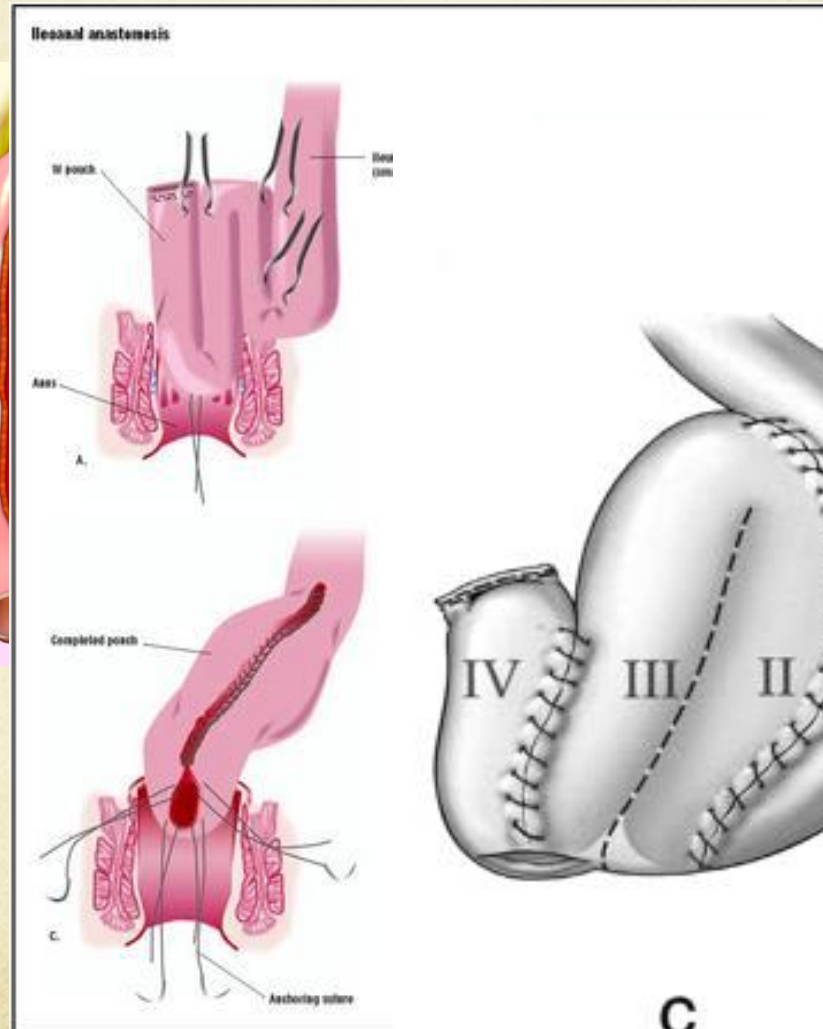
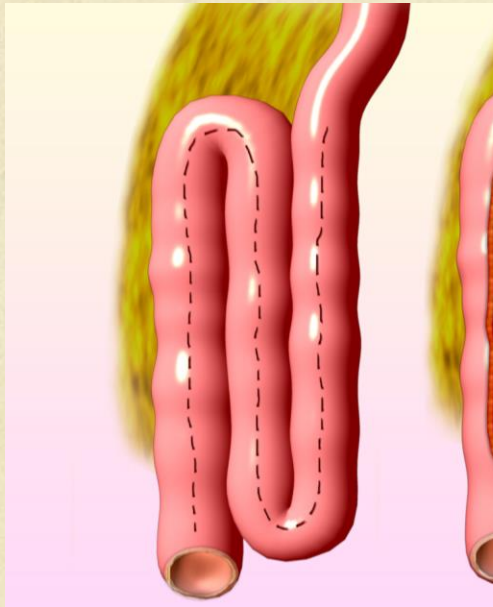
Ileo-anal pouch Tips if the pouch can not reach anal canal

Majid Bassuni
Sheffield UK and Abu Dhabi UAE

What we wish for?



Other configurations



C

Why?

Original article

doi:10.1111/codi.12748

The impact of mesenteric tension on pouch outcome and quality of life in patients undergoing restorative proctocolectomy

X.-R. Wu, H. T. Kirat, X. Xhaja, J. P. Hammel, R. P. Kiran and J. M. Church

Department of Colorectal Surgery, Cleveland Clinic Foundation, Cleveland, Ohio, USA

Received 20 March 2014; revised 15 May 2014; accepted 4 June 2014; Accepted Article online 20 August 2014

Why?

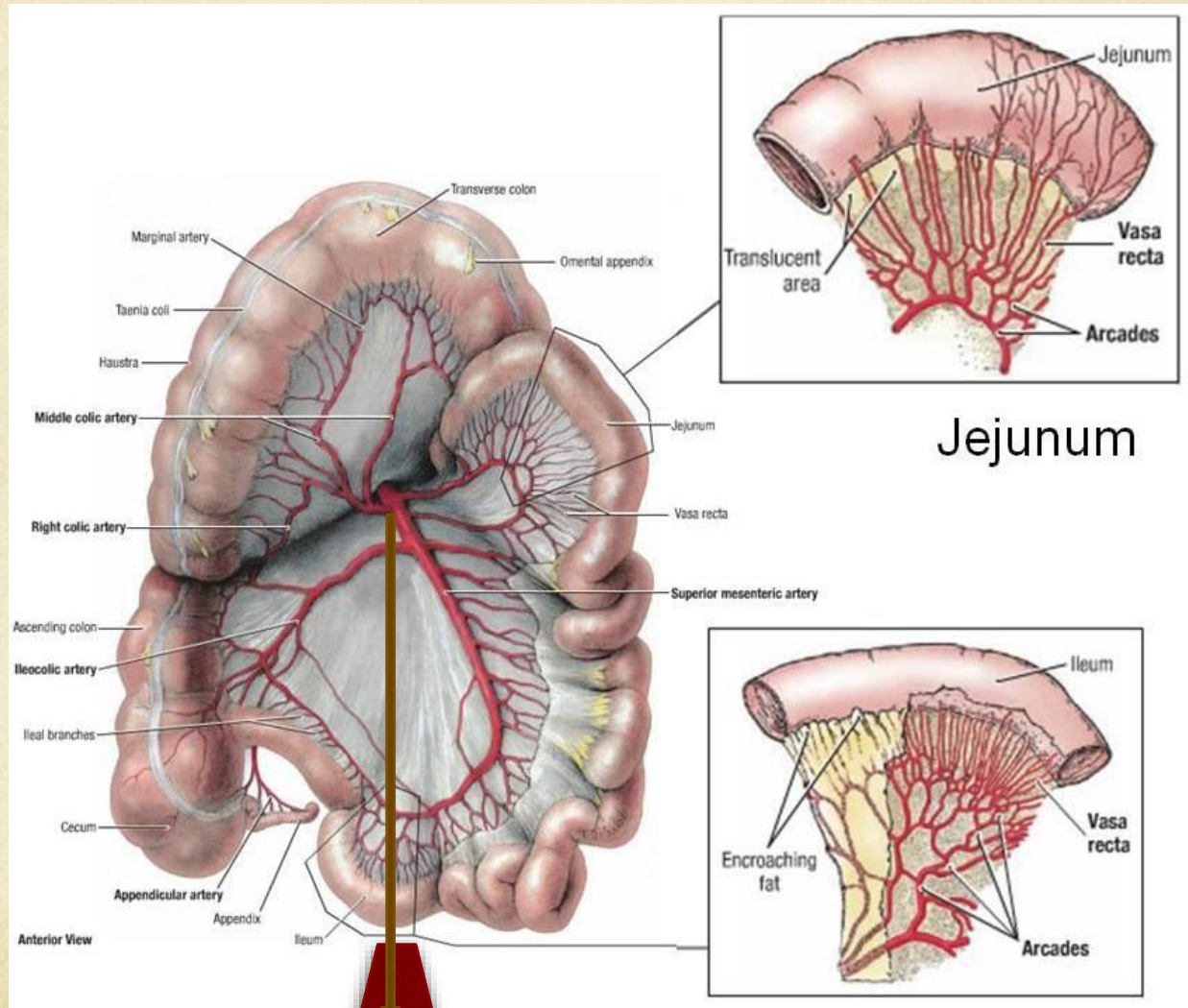
- Anastomotic dehiscence.
- Pouch loss and permanent stoma
- Death.
- Chronic pelvic sepsis.
- Anastomotic stricture.
- Chronic Pouch failure
- NOT pouchitis.

Criteria of “Mesenteric Tension”

- Subjective
- Anal canal length.
- Distance from top of symphysis pubis to apex of pouch.
- Distance from pouch to ileostomy

Five minutes anatomy revision

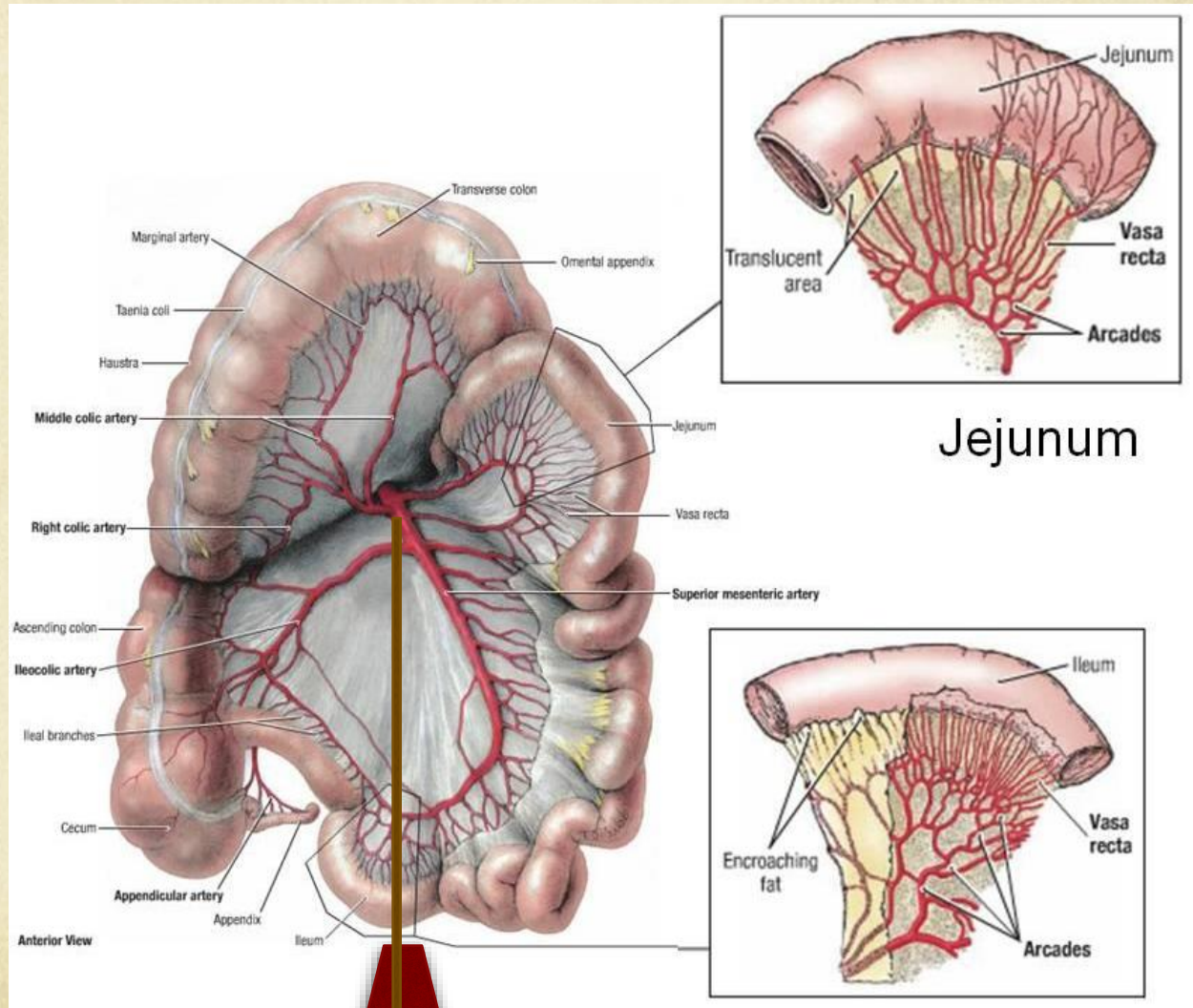
31.2
(28-33) cm



Jejunum

Five minutes anatomy revision

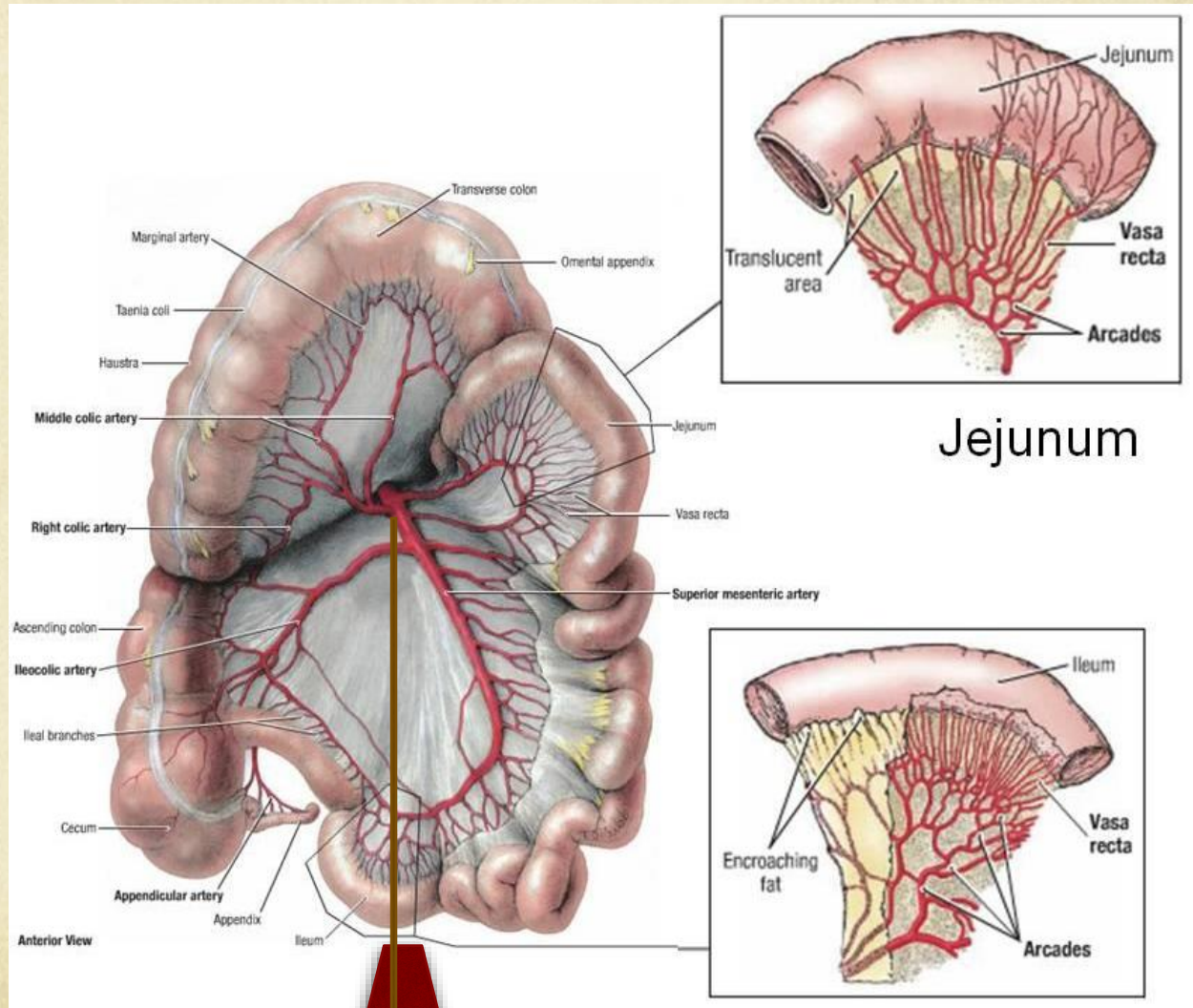
2 cm
33.2
33%



Jejunum

Five minutes anatomy revision

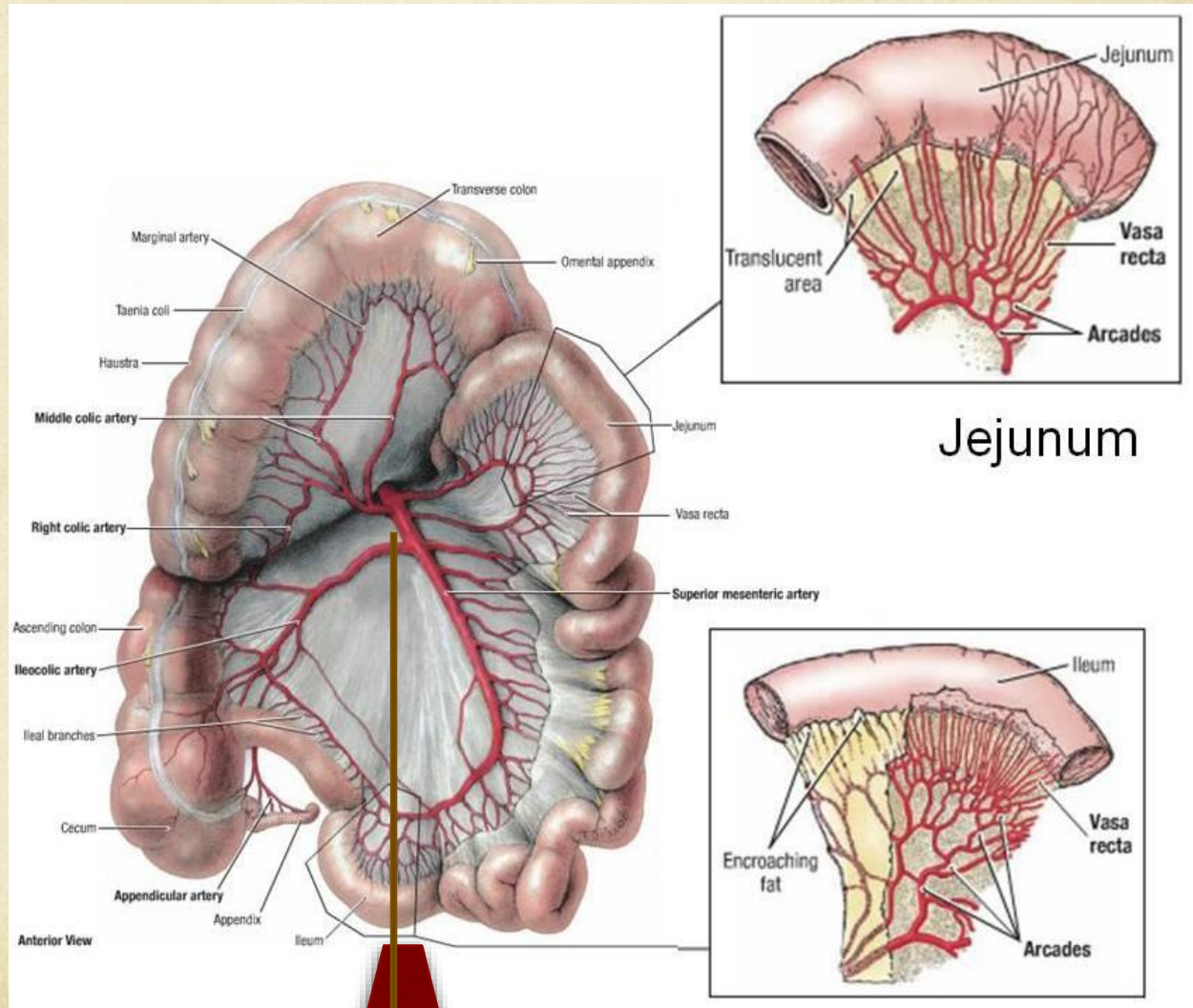
4 cm
33.2
55%



Jejunum

Five minutes anatomy revision

6 cm
33.2
100%



Lengthening techniques

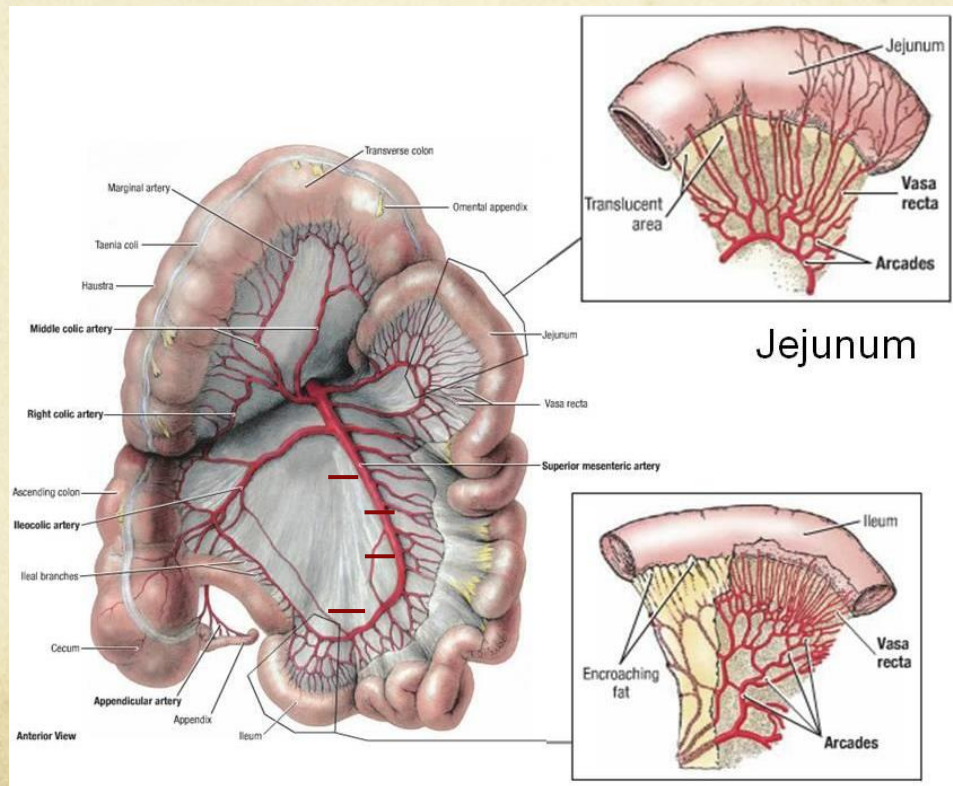
Pouch folding

- Posterior (The mesentery is anterior) if there is no tension
- Anterior (Posterior mesentery) will gain 0.5-1 cm.

Lengthening techniques

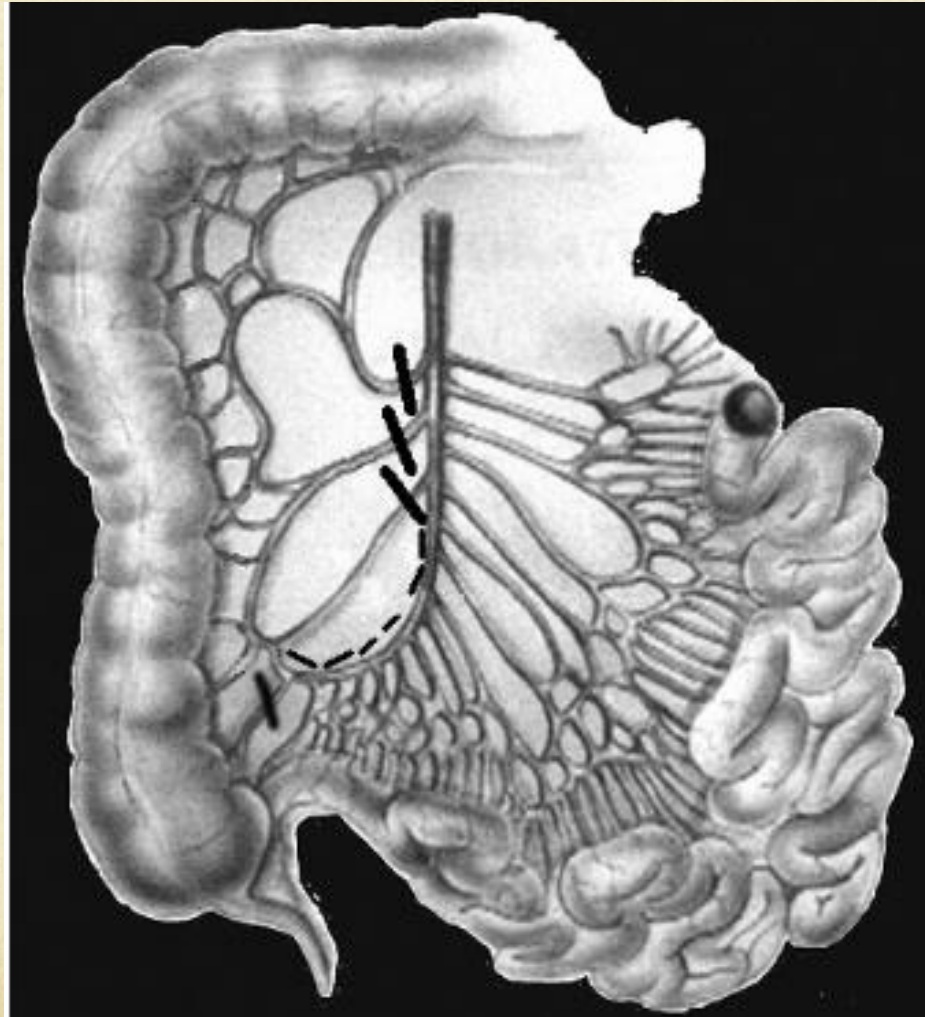
Mesenteric incisions

- Anterior and posterior
- Will gain 2 cm in average.



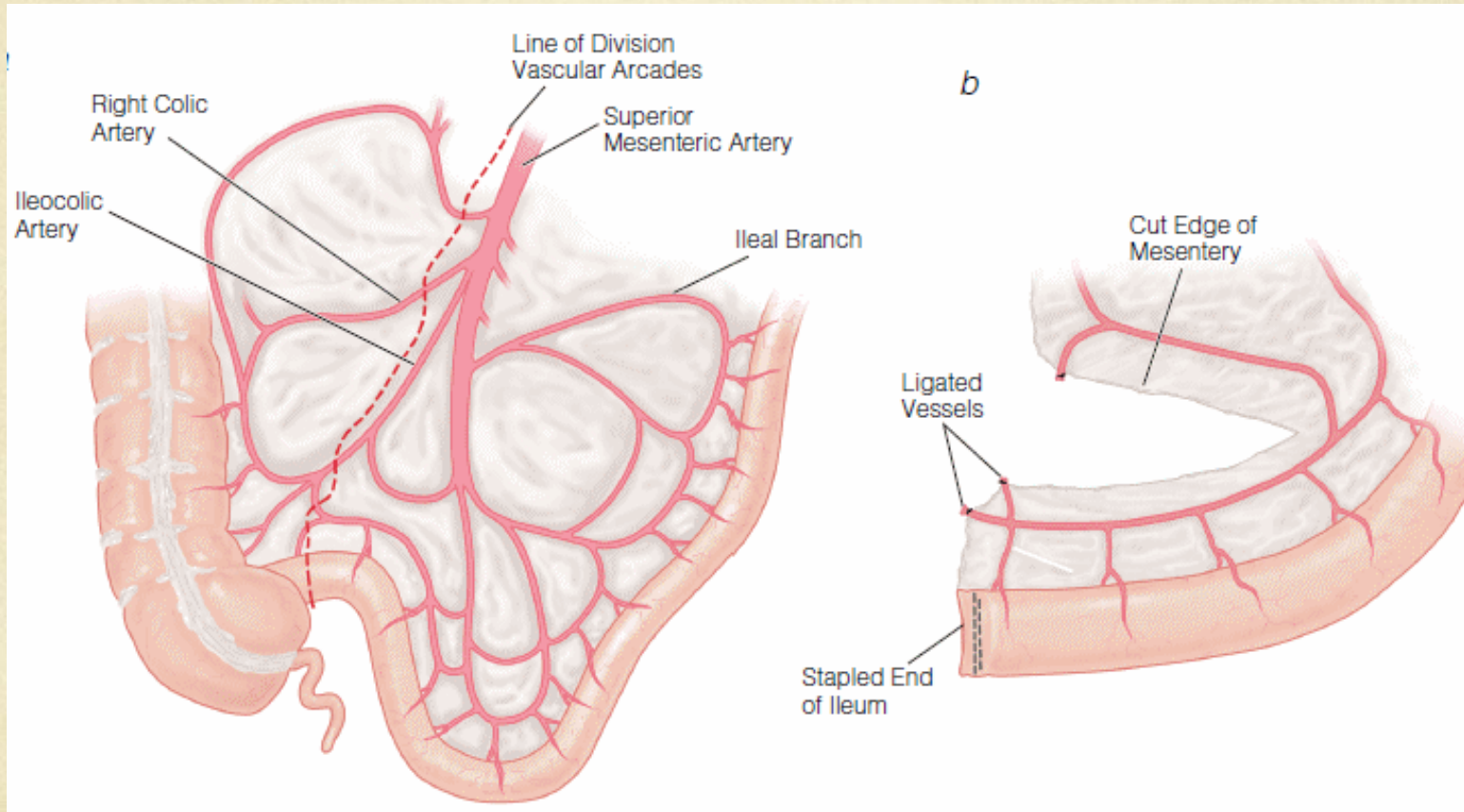
Lengthening techniques

Mesenteric vascular division



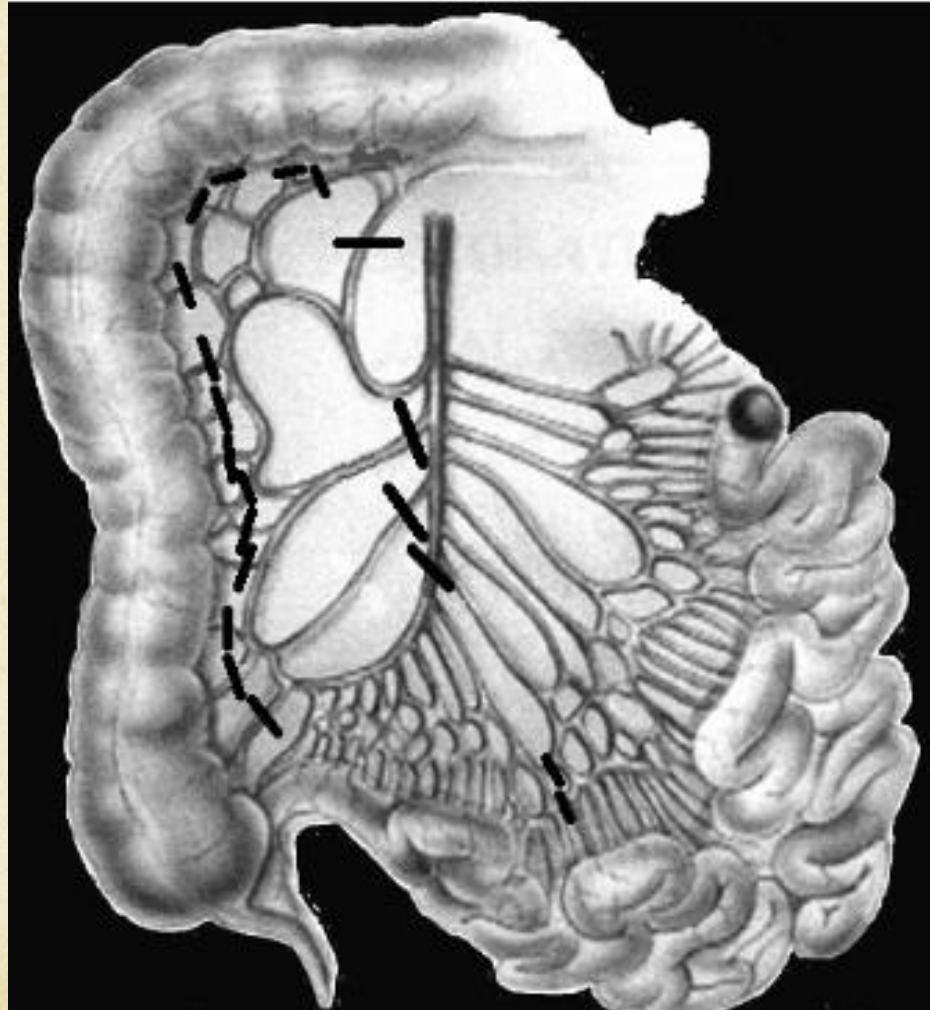
Lengthening techniques

Mesenteric vascular division



Lengthening techniques

Alternative Mesenteric vascular



11.2 cm gain

Lengthening techniques

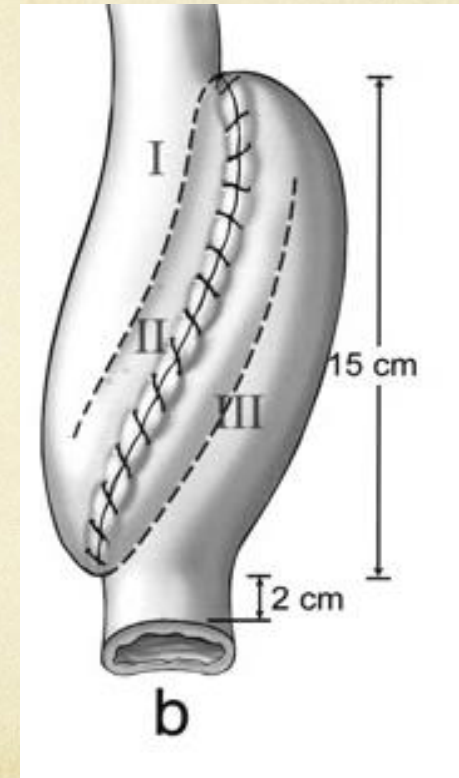
Stapled or hand suture

- Stapled anastomosis needs 2 cm less length
- Higher incidence of leak
- Controversial matter between surgeons.
- Cost???
- Role for TAMIS??

Lengthening techniques

S Pouch

- Gains 1-2 cm more than J or W pouches.
- Spontaneous evacuation in 50%





Thank You