

Rotational gluteal flap in treatment of pilonidal disease



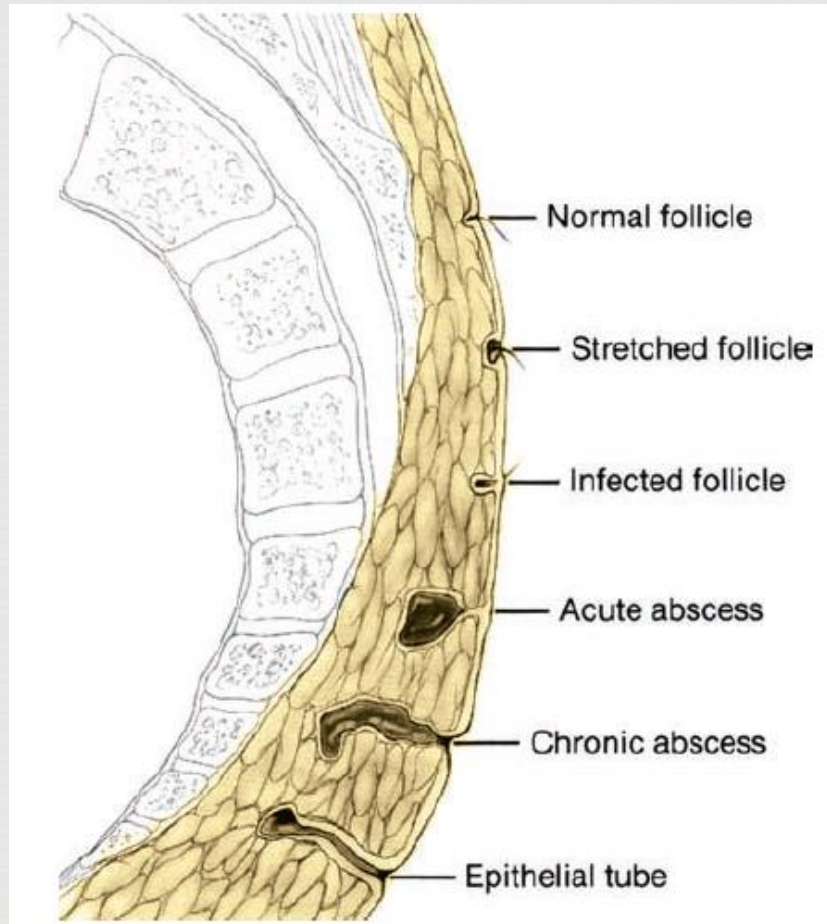
Mohammad Mohammad Alsaeed
Lecturer of general surgery
Mansoura university

Introduction

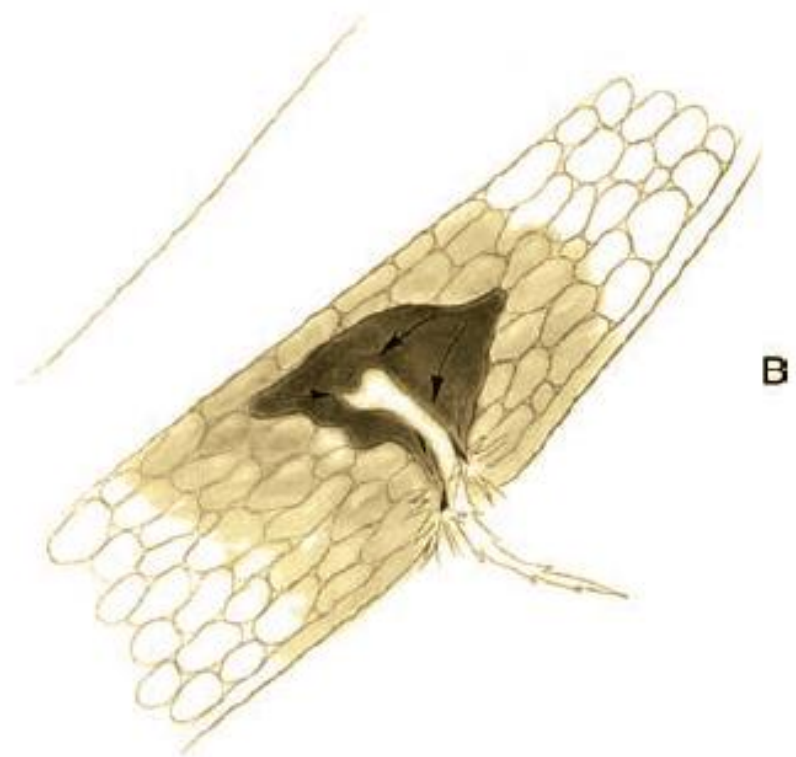
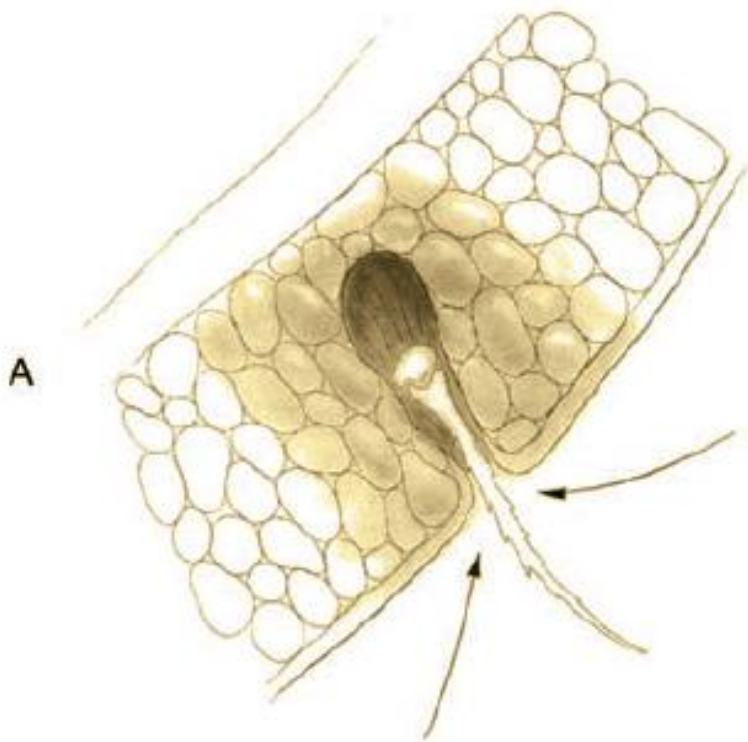


- ❧ Pilonidal disease is common.
- ❧ It affects mainly young adults.
- ❧ It can cause disturbing symptoms like pain and discharge.

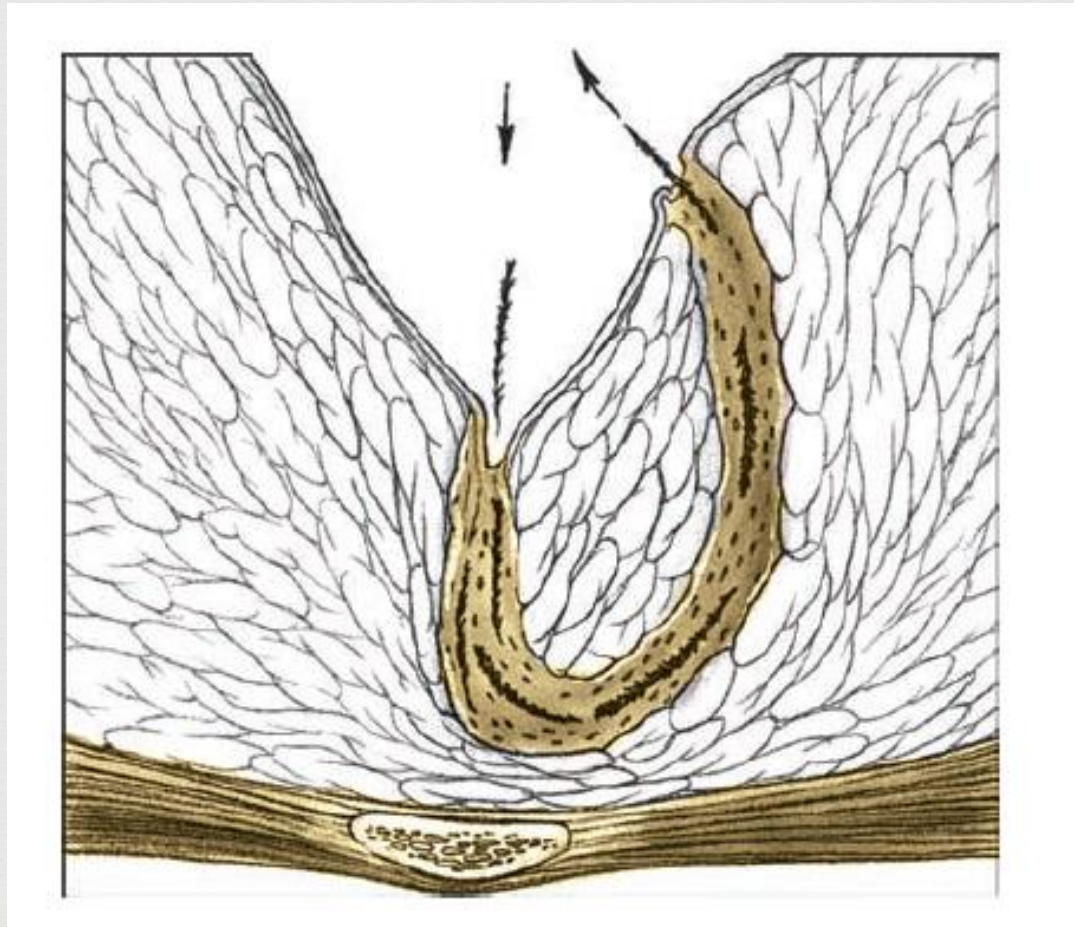
Pathogenesis



Pathogenesis



Pathogenesis



Primary midline pit



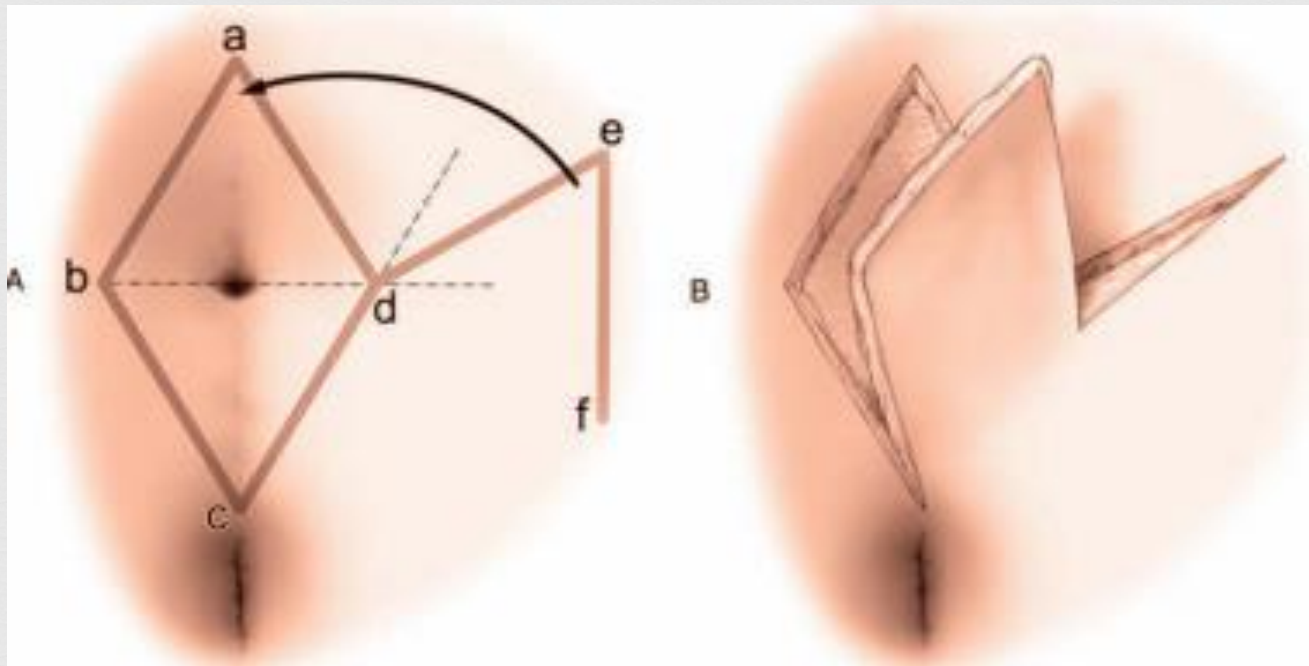
Secondary lateral opening



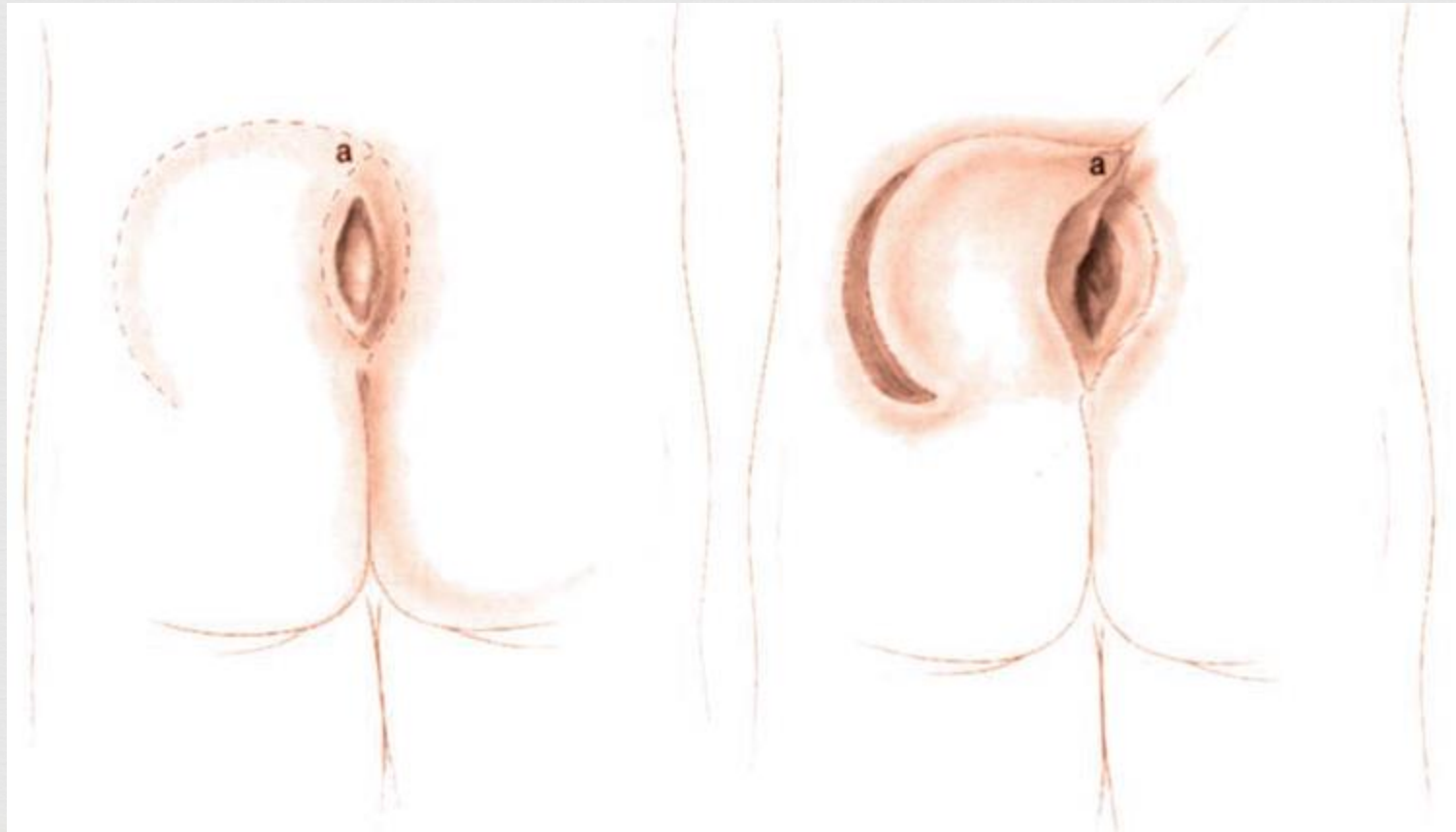
Available treatment options

- ❧ Non-operative treatment.
- ❧ Incision and marsupialization.
- ❧ Wide excision:
 - ❧ With no closure.
 - ❧ Primary midline closure.
 - ❧ Flap closure:
 - ❧ Karydakis flap.
 - ❧ Rhomboid flap.

Rhomboid flap



Rotational gluteal flap

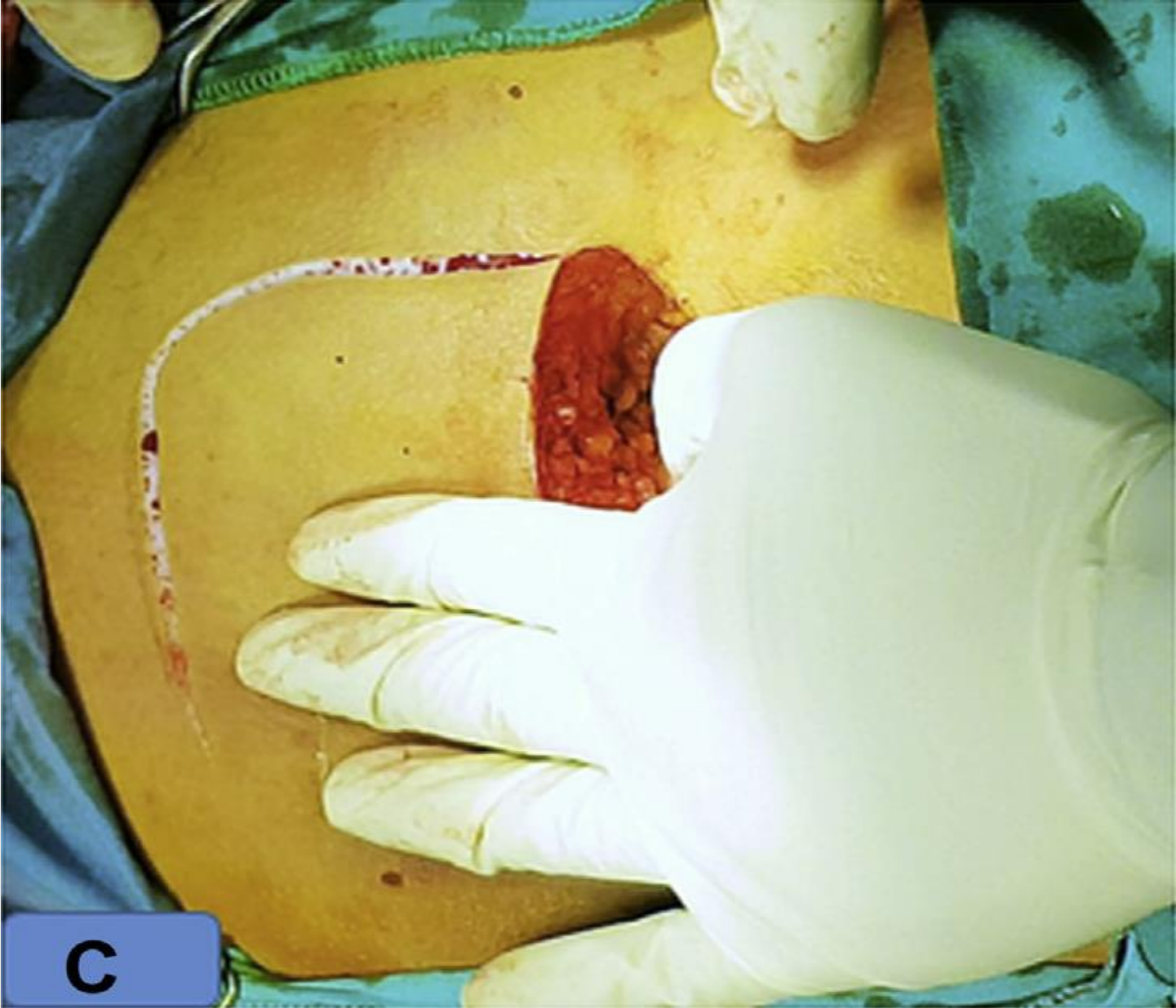


RGF



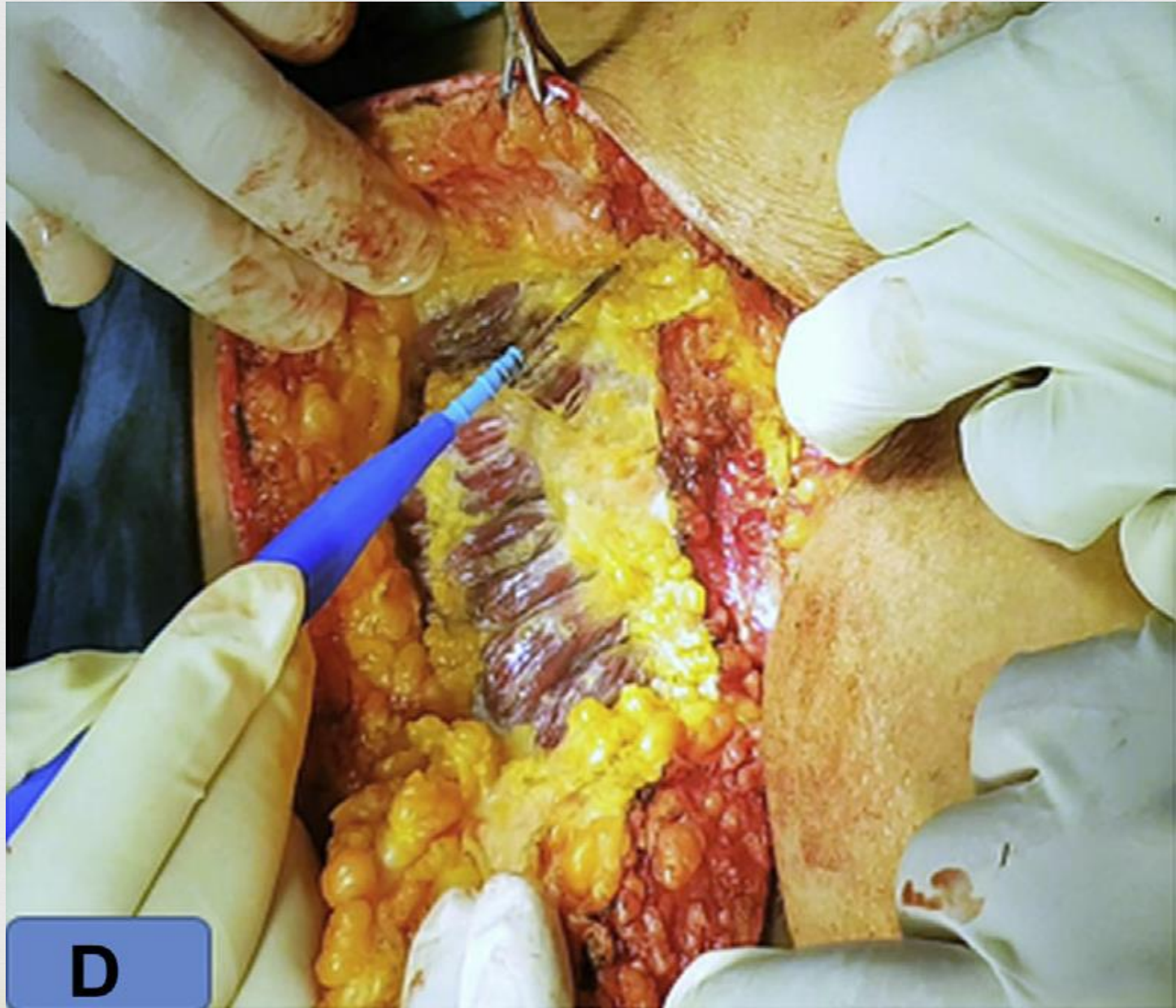
A

RGF

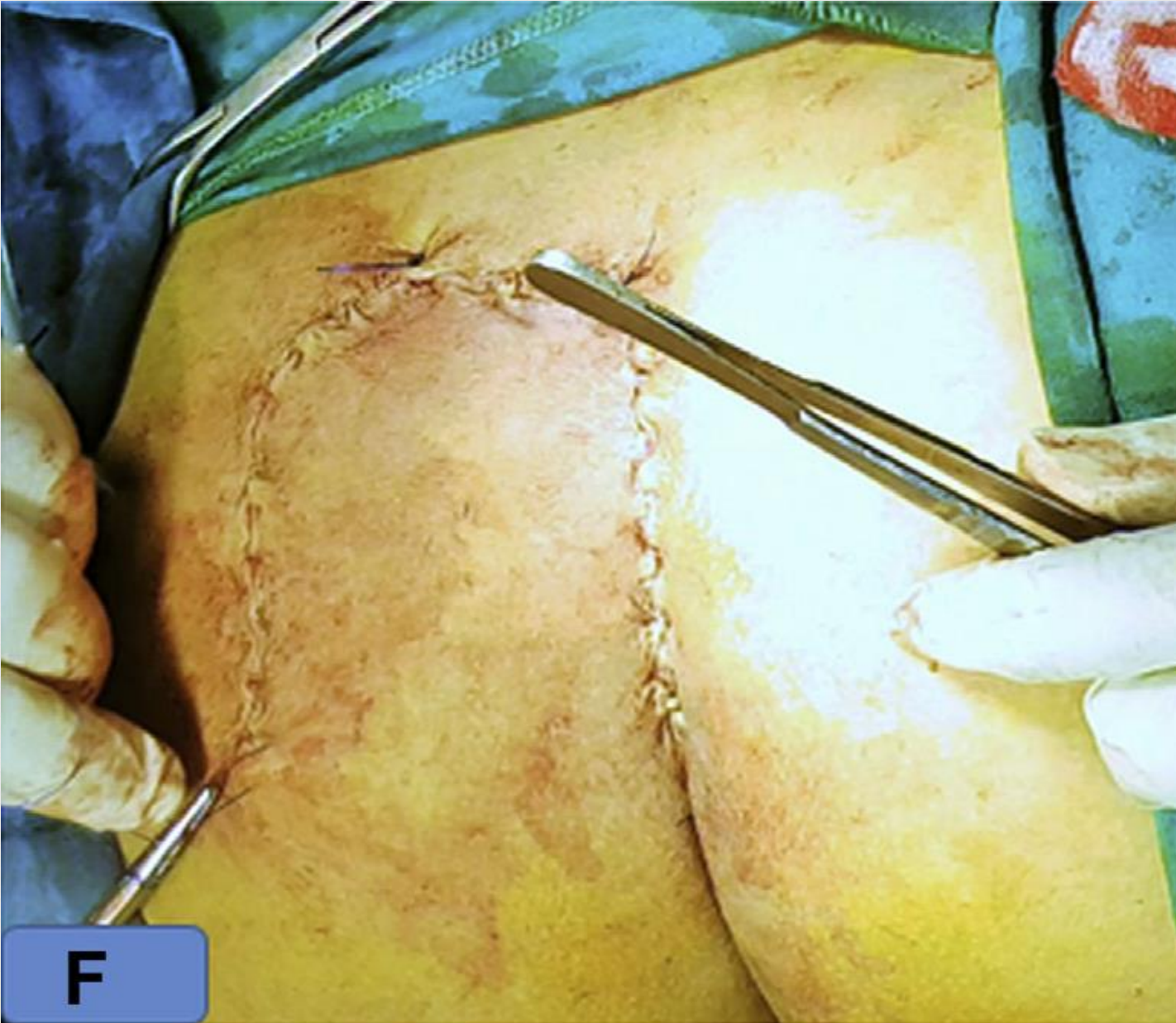


C

RGF



RGf



F

Results



	RGF	MLF	P value
No	95	94	-
Age	22.9 ± 4.9	24.1 ± 6.1	0.13
M/F	74/21	69/25	0.3
BMI	26 ± 2.2	26.1 ± 2.47	0.77

Results



	RGF	MLF	P value
Operative time in minutes	43.6 ± 6	35.6 ± 6.2	<u>< 0.0001</u>
Postoperative drainage in days	11.5 ± 3.2	12.7 ± 3.25	<u>0.01</u>
Seroma (%)	6 (6.3)	16 (17)	<u>0.038</u>
Recurrence (%)	3 (3.1)	7 (7.4)	0.21
Cosmetic appearance of the wound	6.4 ± 1.4	4.7 ± 2.1	<u>< 0.0001</u>

Thank you

