

Updates on the Mesentery - their importance in colorectal surgery

Prof J Calvin Coffey
Professor and Chair of Surgery
Graduate Entry Medical School,
University of Limerick
University Hospital Limerick



What is the mesentery?

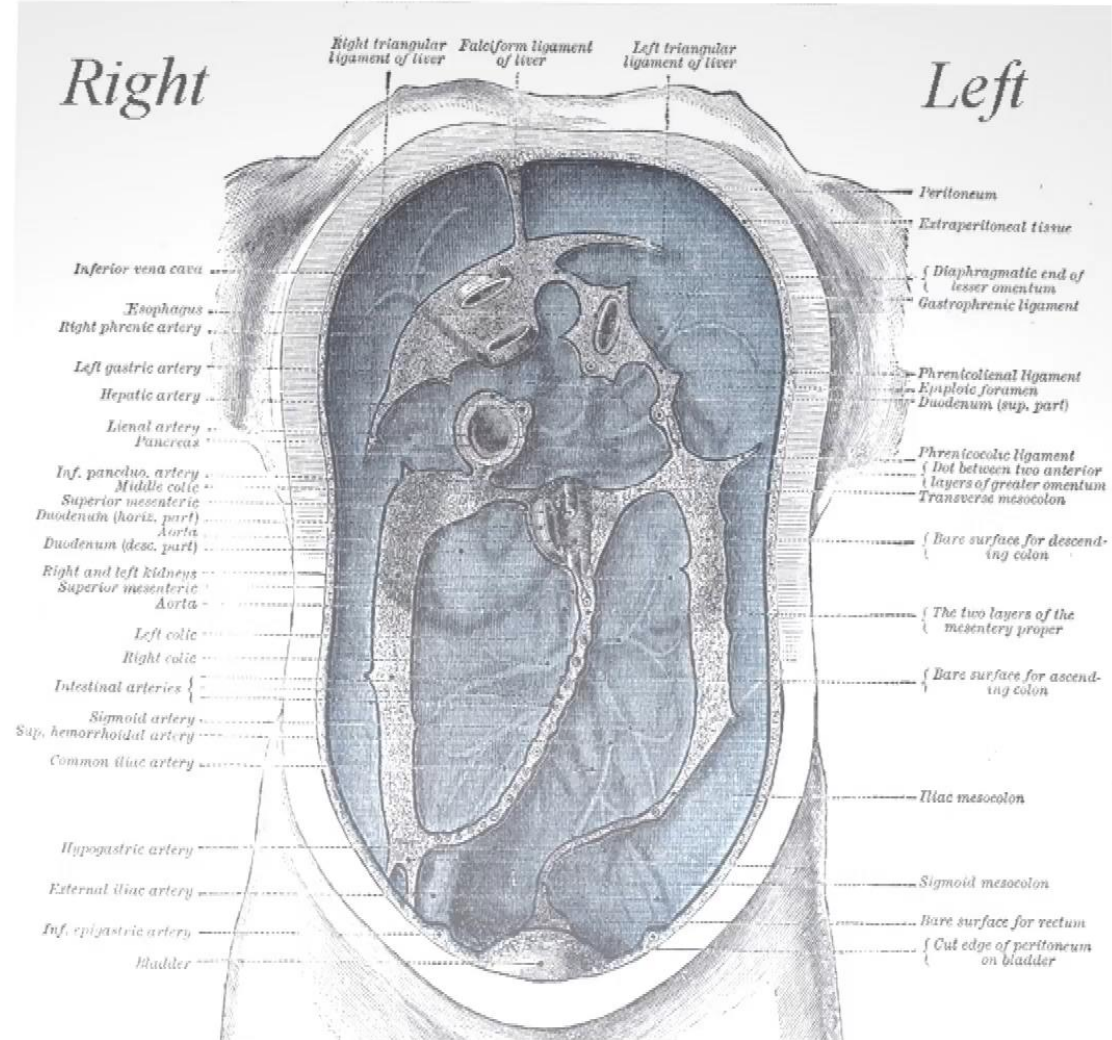
“The mesentery is a double fold
of peritoneum that maintains
the intestine in position”



Classic model

150 years
Old

Henry Gray
Gray's Anatomy



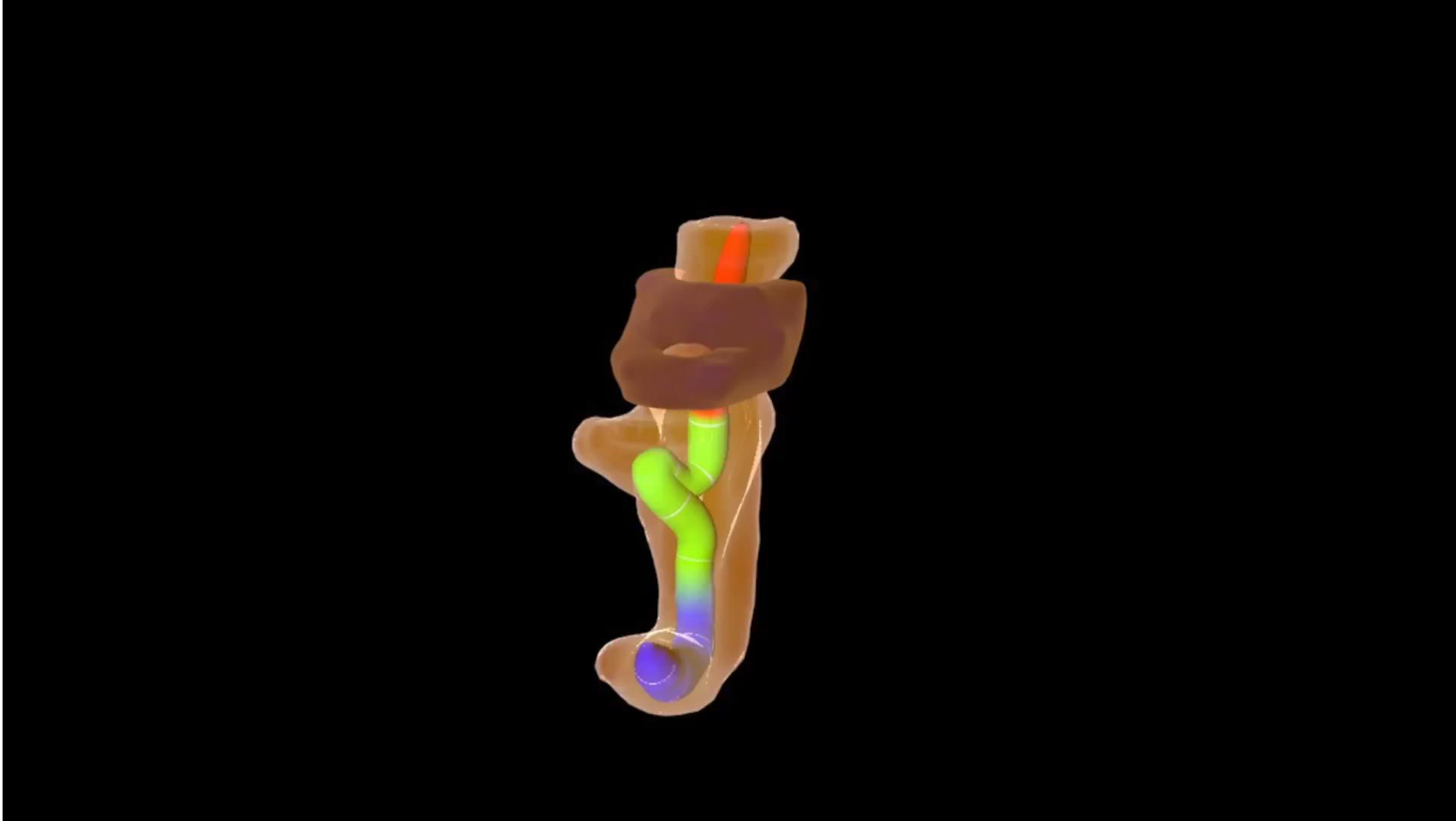
New model of the “mesentery”



The mesentery as an Organ



The mesentery incubates digestive organs



20th Annual Conference of the Egyptian Group of Colorectal Surgeons

The mesentery links digestive organs



20th Annual Conference of the Egyptian Group of Colorectal Surgeons

New definition – The Mesentery

The mesentery is the collection of tissues
That maintains all abdominal digestive
Organs in position and in continuity with
Other systems



**Gray's Anatomy
41st Ed**

**Langman's Medical
Embryology**

**Gray's Surgical
Anatomy, 2019**

**Seminars in
Developmental
Biology**

**Gray's Anatomy
42 Ed**

20th Annual Conference of the Egyptian Group of Colorectal Surgeons



Scientific Implications



The mesentery: structure,
function, and role in disease

t.co/4aeJtc3LSG

THE LANCET
Gastroenterology & Hepatology

Cellular,
Molecular



Anatomy, embryology, physiology,
Immunology, evolutionary biology

The Mesenteric Digestive System



Clinical Implications

Defining the mesentery as an organ and what this means for understanding its roles in digestive disorders

t.co/1je15ec8nl

Journal
Expert Review of Gastroenterology & Hepatology >
Volume 11, 2017 - Issue 8

↓

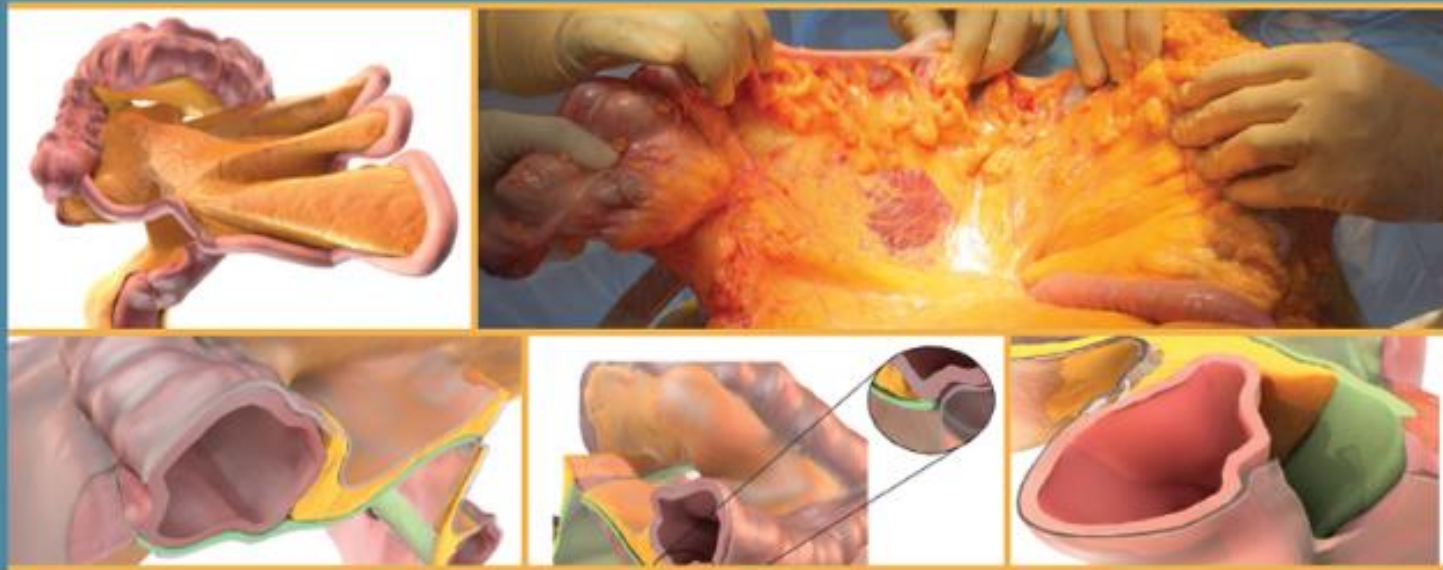
Diagnostic
Therapeutic

↓

Surgery, Pathology, Gastroenterology
Radiology, Oncology,.....

MESENTERIC PRINCIPLES OF GASTROINTESTINAL SURGERY

BASIC AND
APPLIED SCIENCE



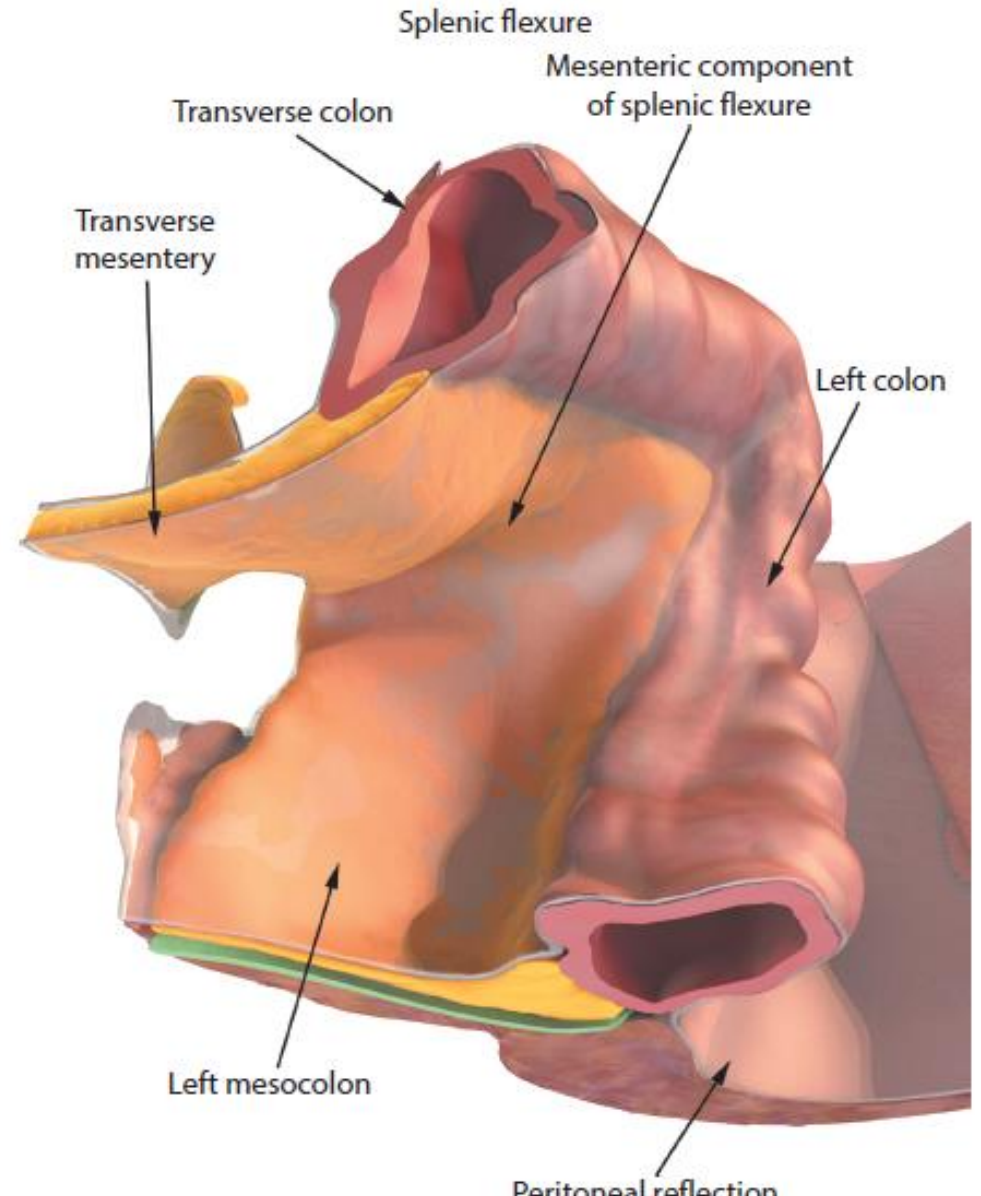
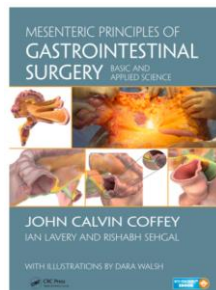
20th Annual Conference of the Egyptian Group of Colorectal Surgeons

New model – New Language

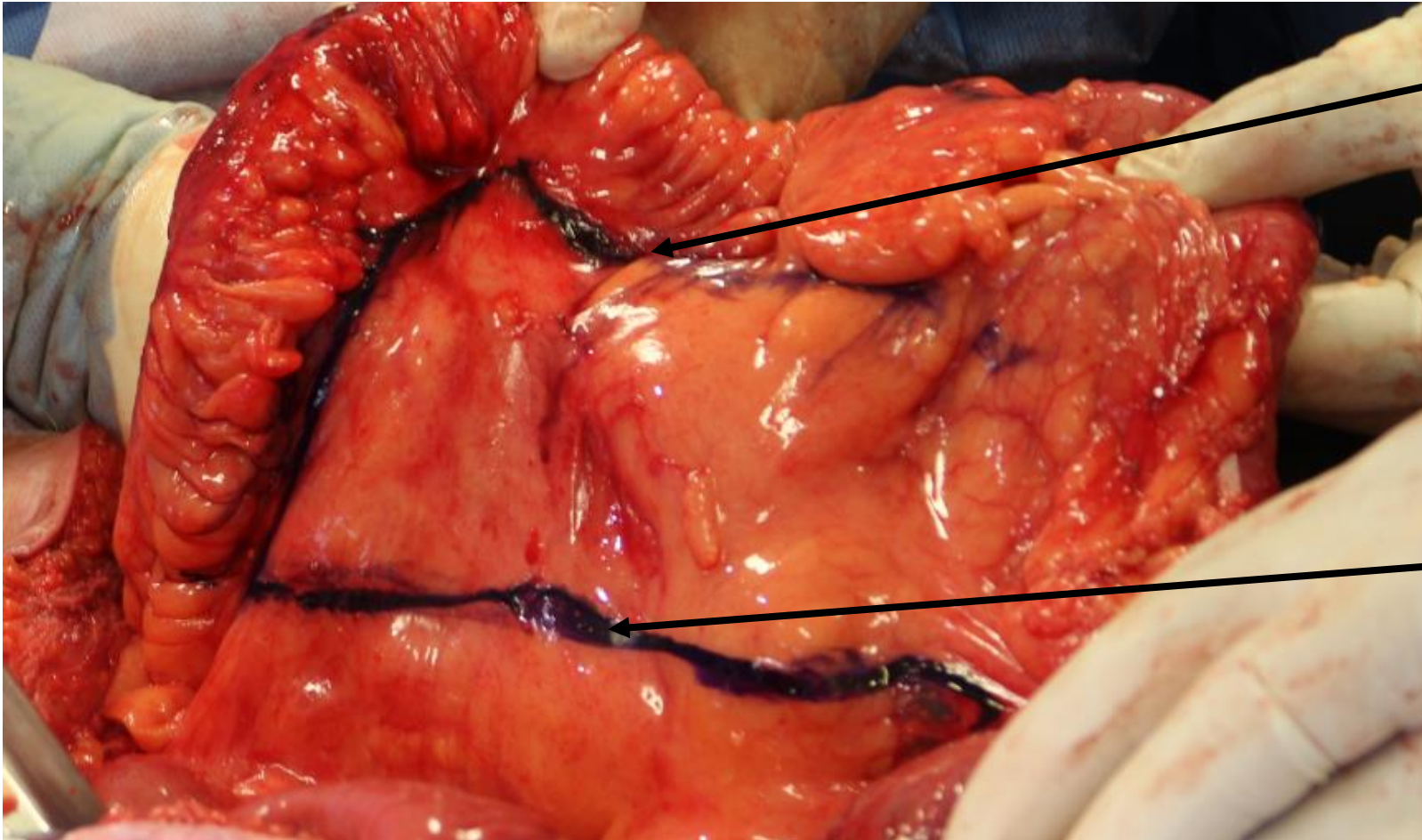


March 2016

STANDARDISATION



Crohn's Disease – conventional versus Mesenteric Resection

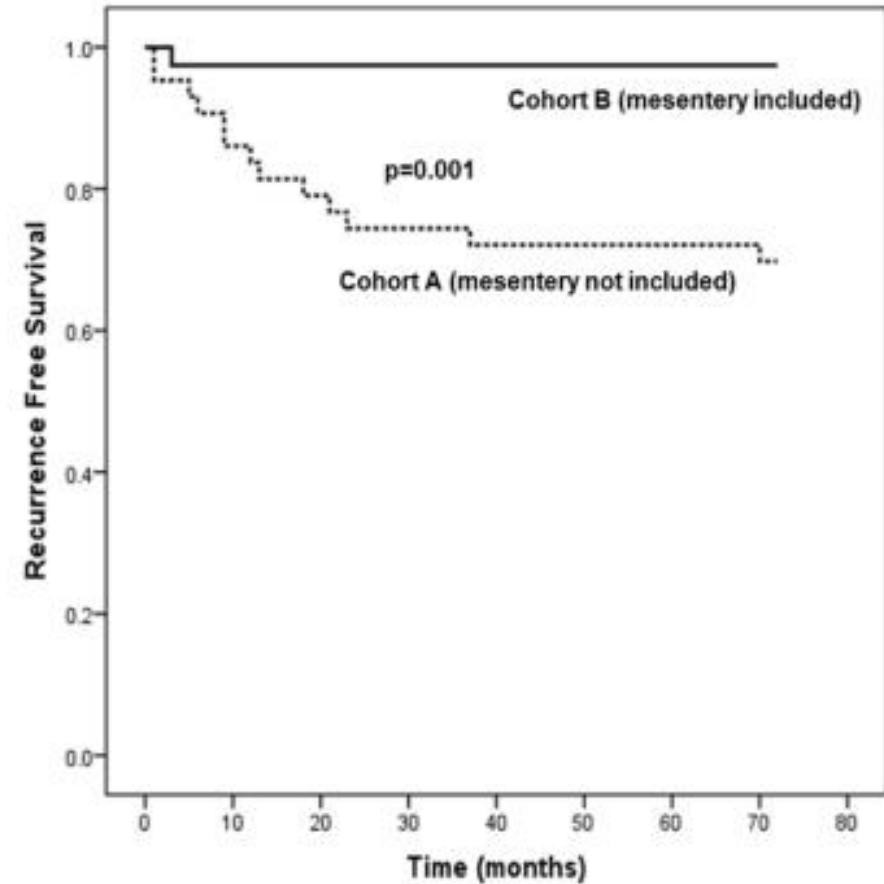
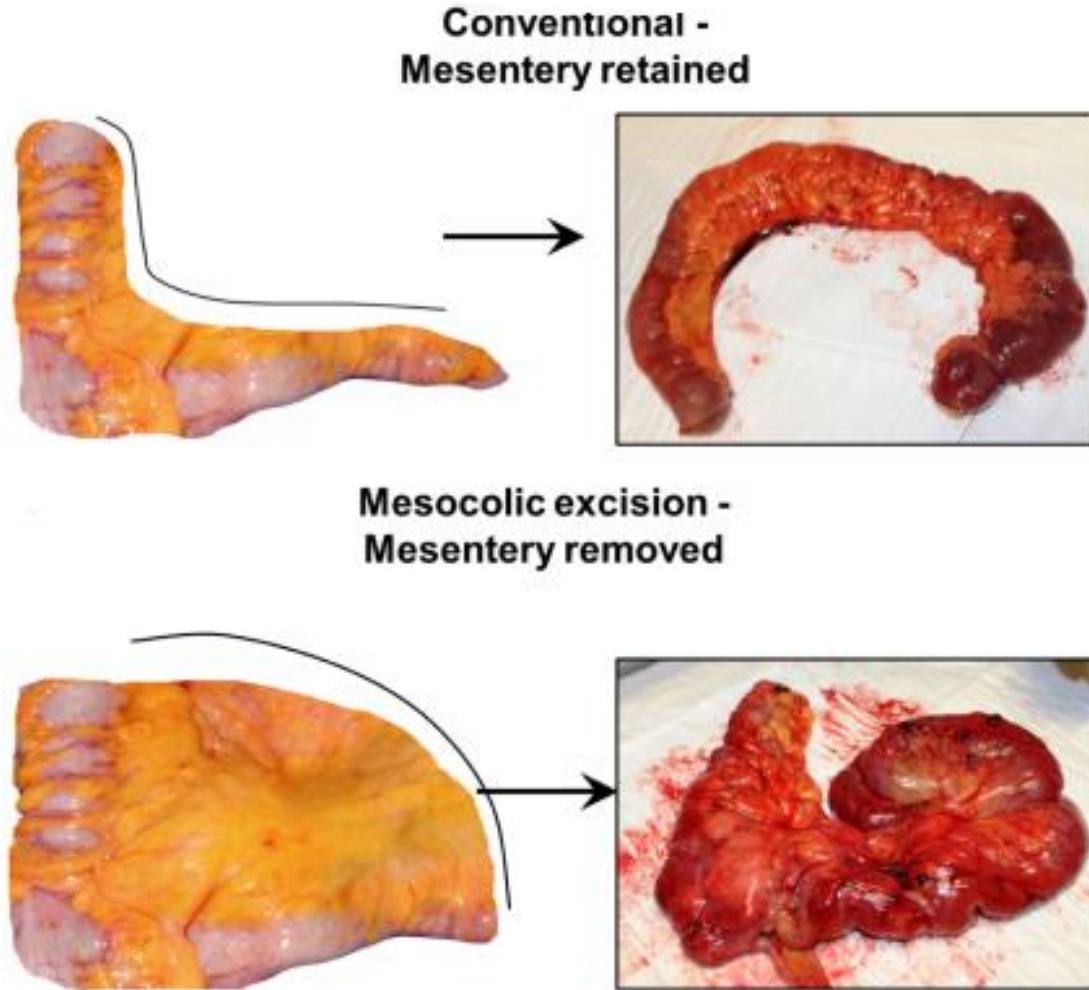


**Conventional
Resection**

Mesentery retained

**Mesenteric
Resection**

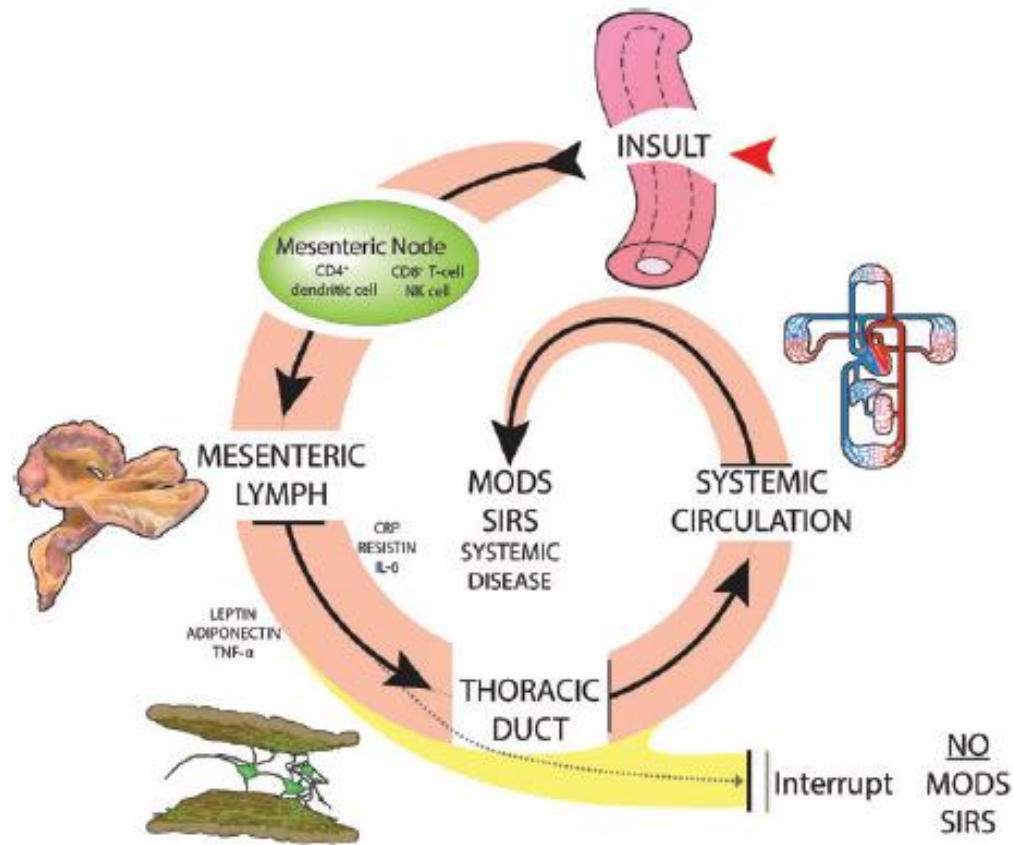
Mesenteric resection was associated with reduced surgical recurrence in ileocolic Crohn's disease



Coffey et al, Journal of Crohn's Colitis, 2018

The Mesentery, Systemic Inflammation, and Crohn's Disease

Rivera et al.,
Dep. Gastroenterology
University of Miami
Inflammatory Bowel Diseases, 2018



Mesenteric
Gastroenterology
Miami, 2018





The role of adipose tissue in inflammatory bowel diseases

Carl Weidinger^{a,c}, Ahmed N. Hegazy^{a,b,c}, and Britta Siegmund^a

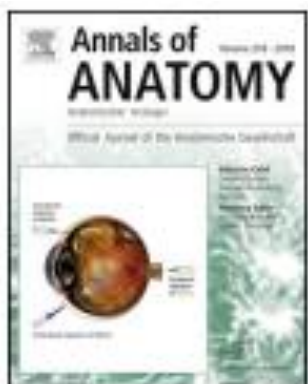
“The increasing body of data supporting the concept that
The mesentery serves as an ...organ ... is strongly
supported by data published over the last 18 months”

Current Opinion in
Gastroenterology, 2018

Mesenteric Immunology
Berlin, 2018



The mesentery: an ADME perspective on a 'new' organ



Aneesh A. Argikar^a  and Upendra A. Argikar^b 

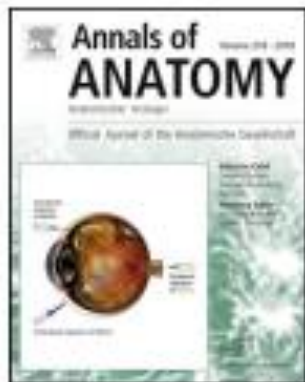
Drug Metabolism Reviews

Mesenteric
pharmacology
Novartis, Cambridge,
USA, 2018

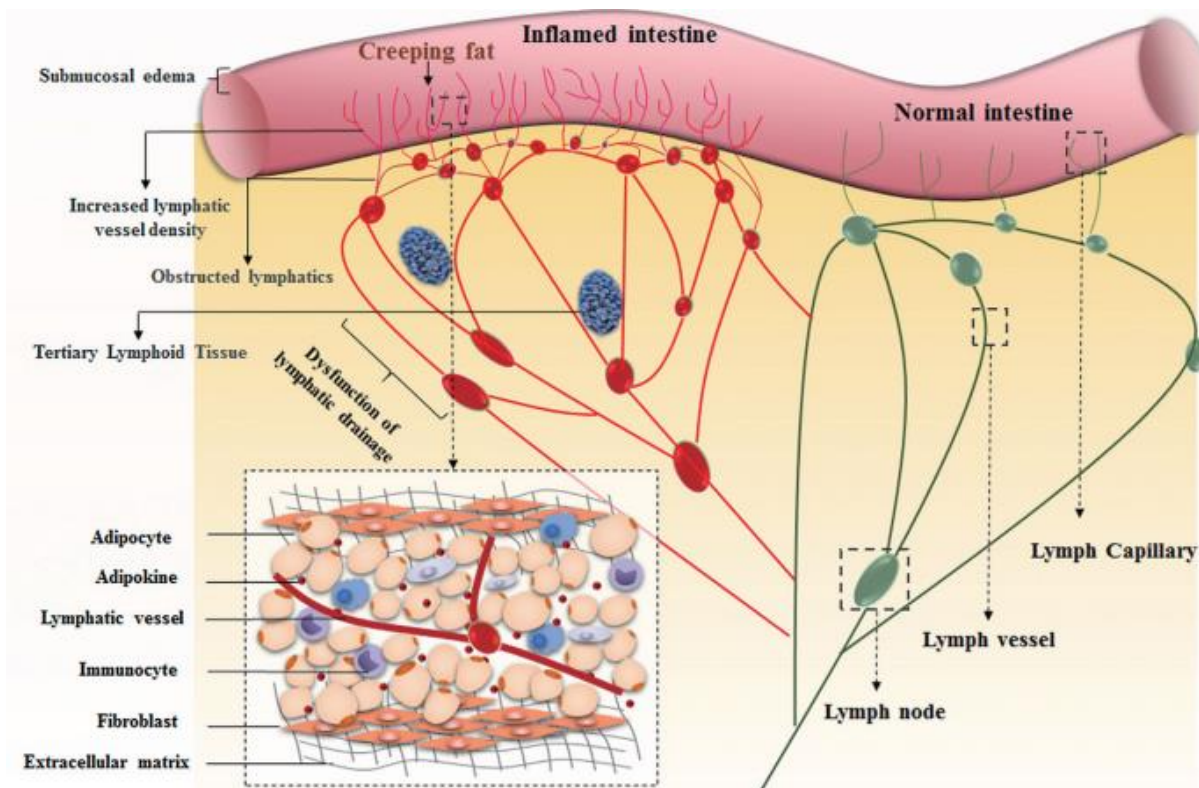
20th Annual Conference of the Egyptian Group of Colorectal Surgeons



Mesenteric organ lymphatics and inflammatory bowel disease



Yuanyuan Ge, Yi Li*, Jianfeng Gong, Weiming Zhu



Mesenteric
lymphangiology
Nanjing, China,
2018



20th Annual Conference of the Egyptian Group of Colorectal Surgeons

The Mesentery

The mesentery is the collection of tissues that maintains all abdominal digestive organs in position and in continuity with other systems



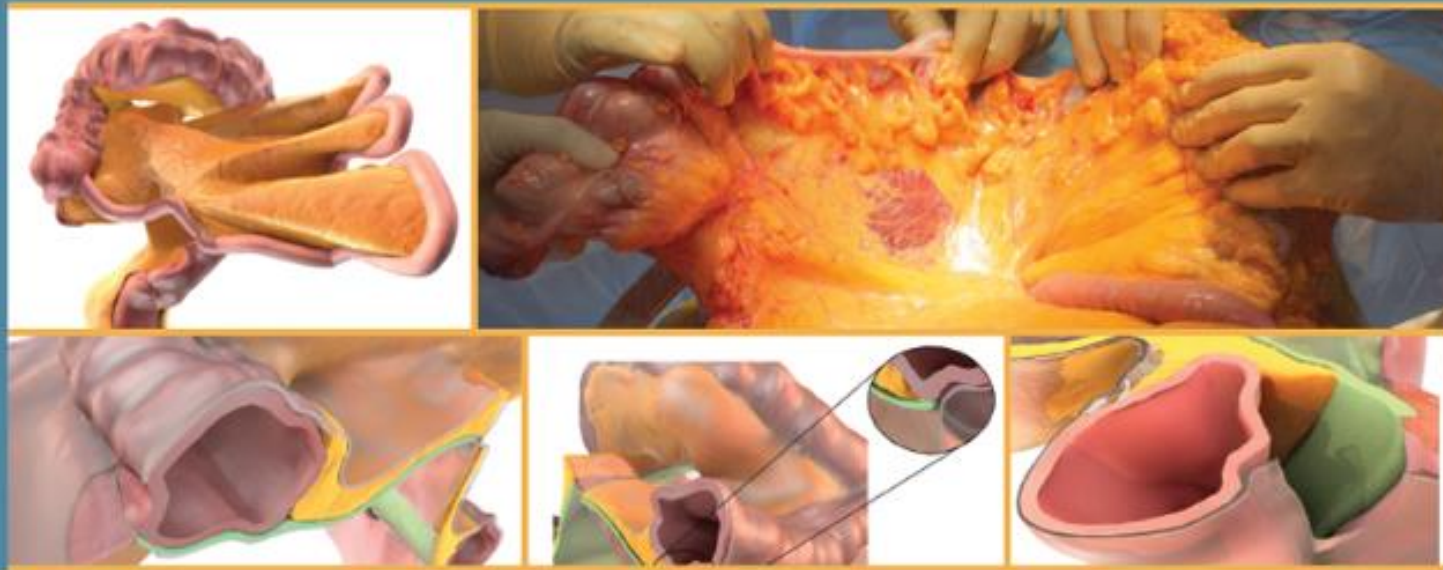
ACKNOWLEDGEMENTS

Dara Walsh, Peter Dockery, Kevin Byrne

Miranda Kiernan^{φ,1,2,3}, Ian Lavery⁴, John P. Burke^{5,6}, Patrick A. Kiely^{2,3,7}, Bo Shen^{4,8}, Victor Fazio⁴, Colin Peirce¹, Manus Moloney⁹, Maeve Skelly⁹, Paul Tibbitts^{1,2}, Hena Hidayat¹, Peter N. Faul¹⁰, Vourneen Healy¹⁰, D. Peter O`Leary¹, P. Ronan O`Connell^{5,6}, Sean Martin⁵, Fergus Shanahan¹², Claudio Fiocchi^{8,13},

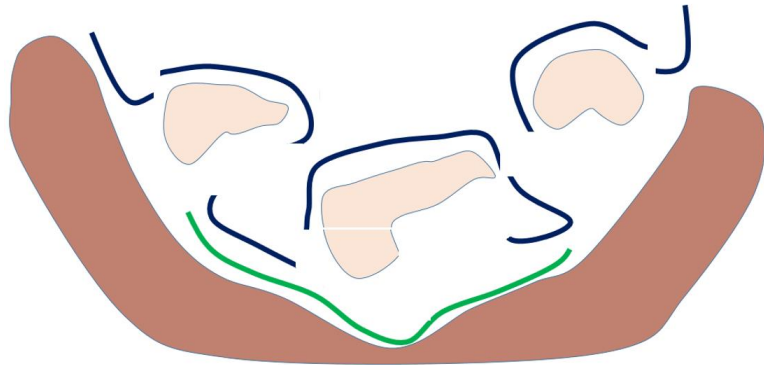
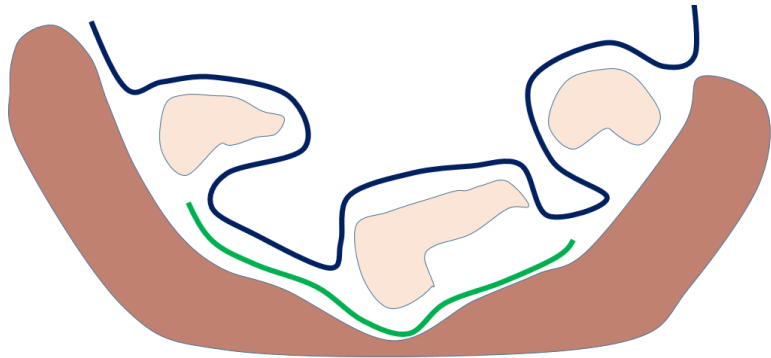
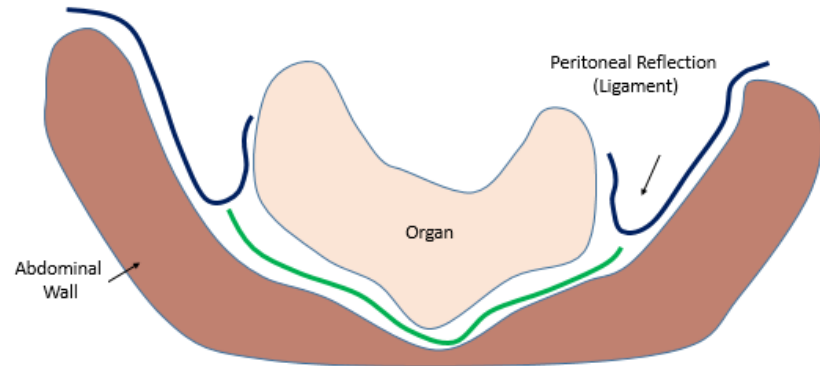
MESENTERIC PRINCIPLES OF GASTROINTESTINAL SURGERY

BASIC AND
APPLIED SCIENCE

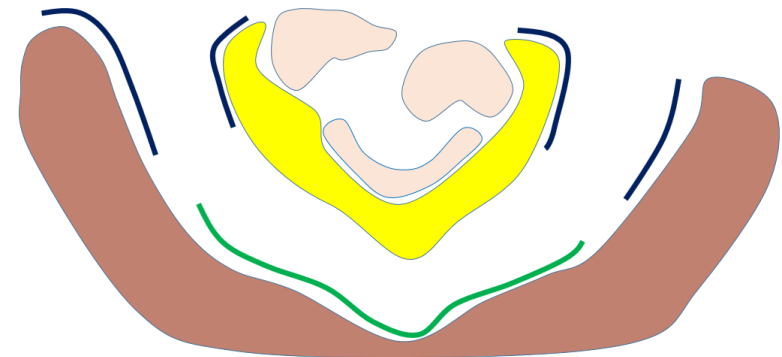
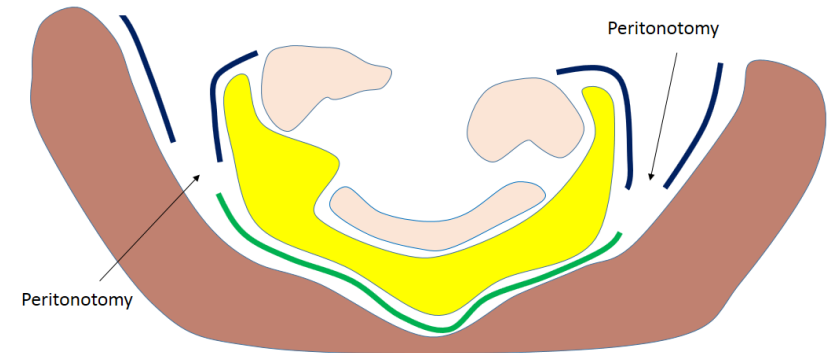
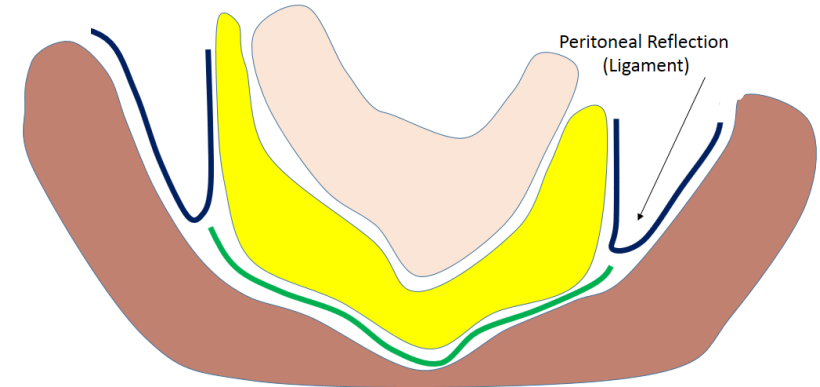


20th Annual Conference of the Egyptian Group of Colorectal Surgeons

Peritoneal model



Mesenteric model

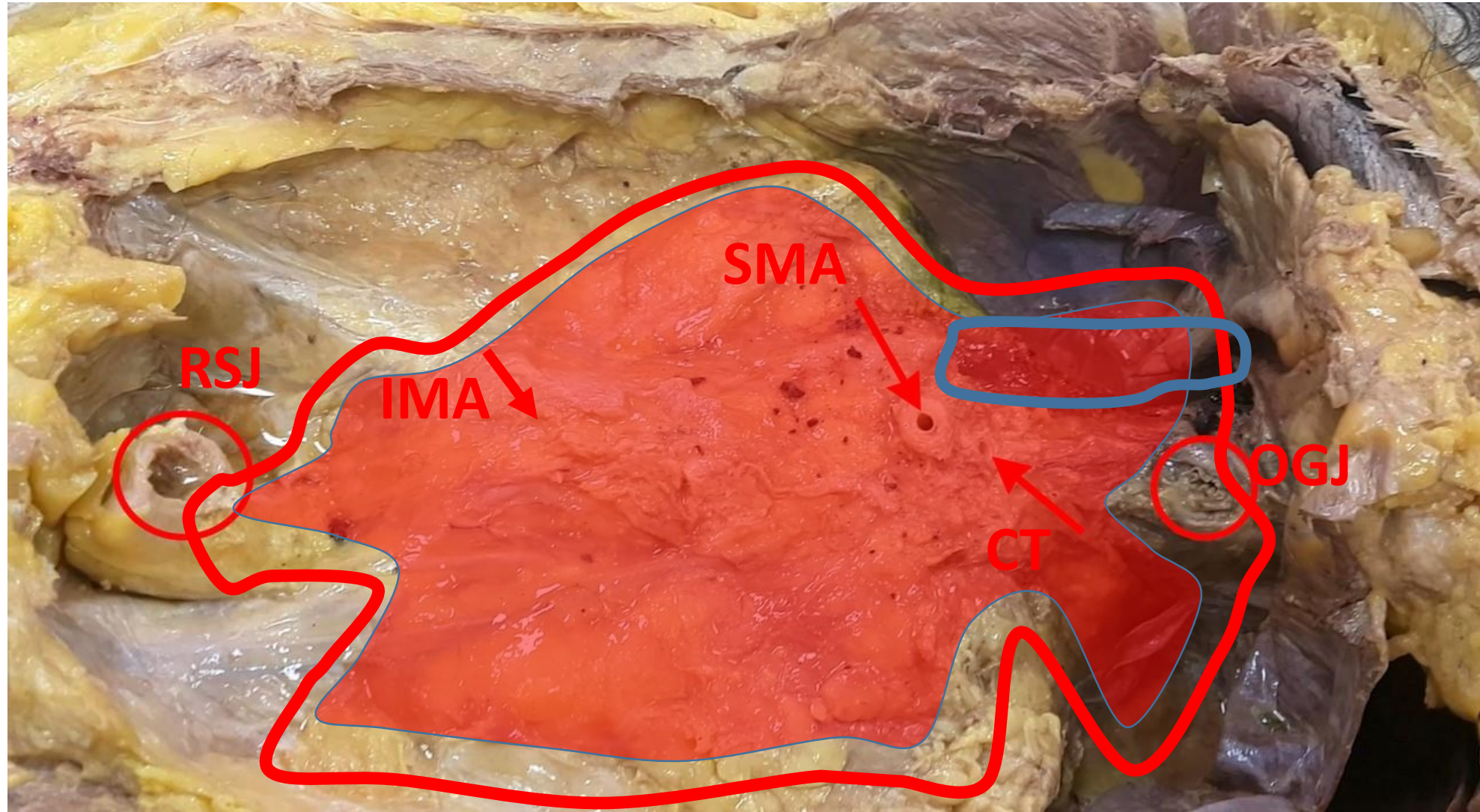


**The mesentery is a primary
determinant of abdominal anatomy**

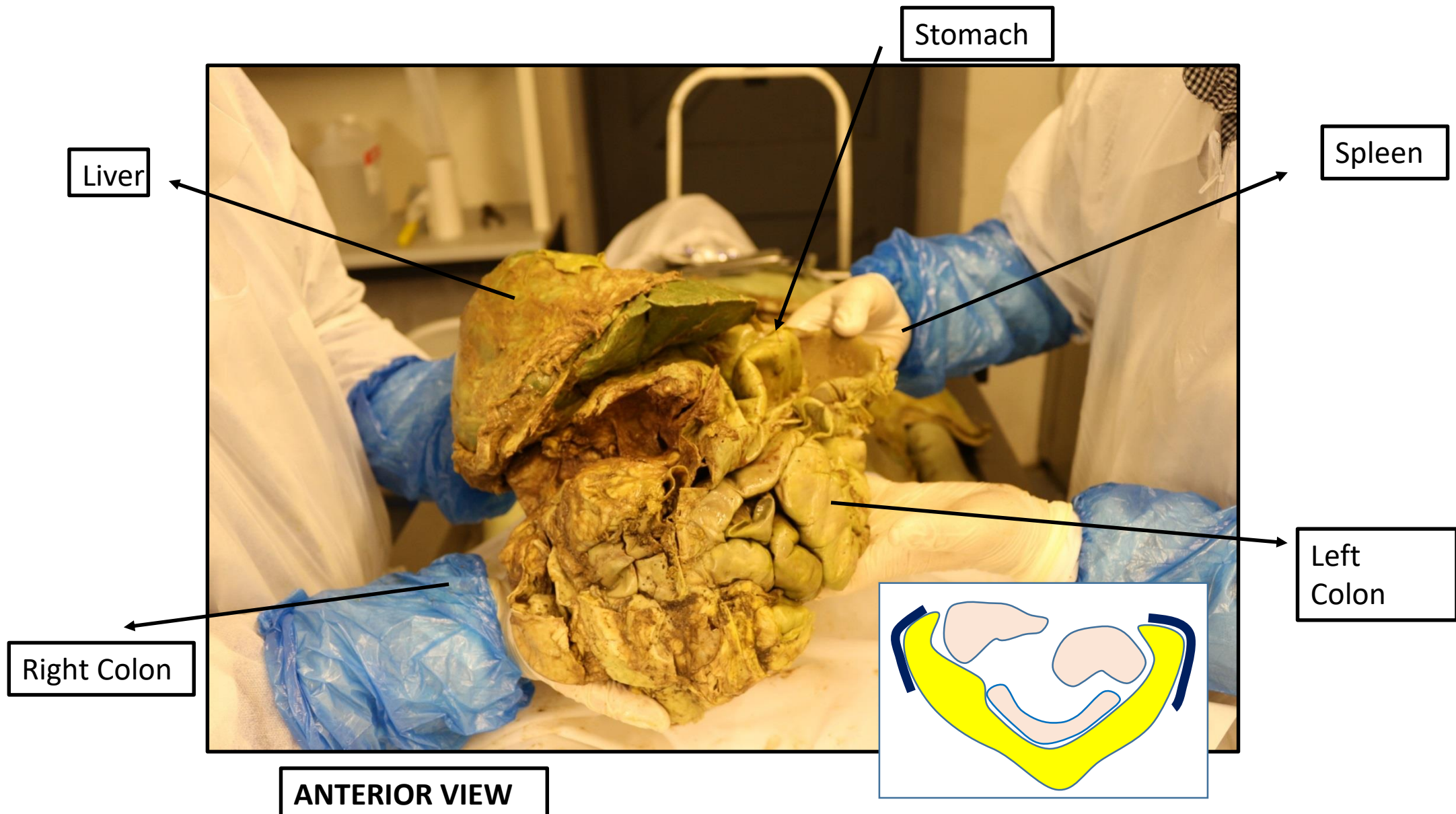
**It determines the anatomy of the
abdominal digestive system**

**It determines peritoneal and peritoneal
cavity anatomy**

How is the mesentery held in position?



Mesenteric digestive system



Mesenteric digestive system

